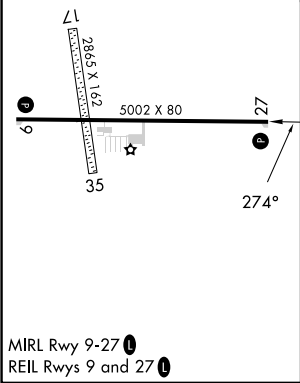
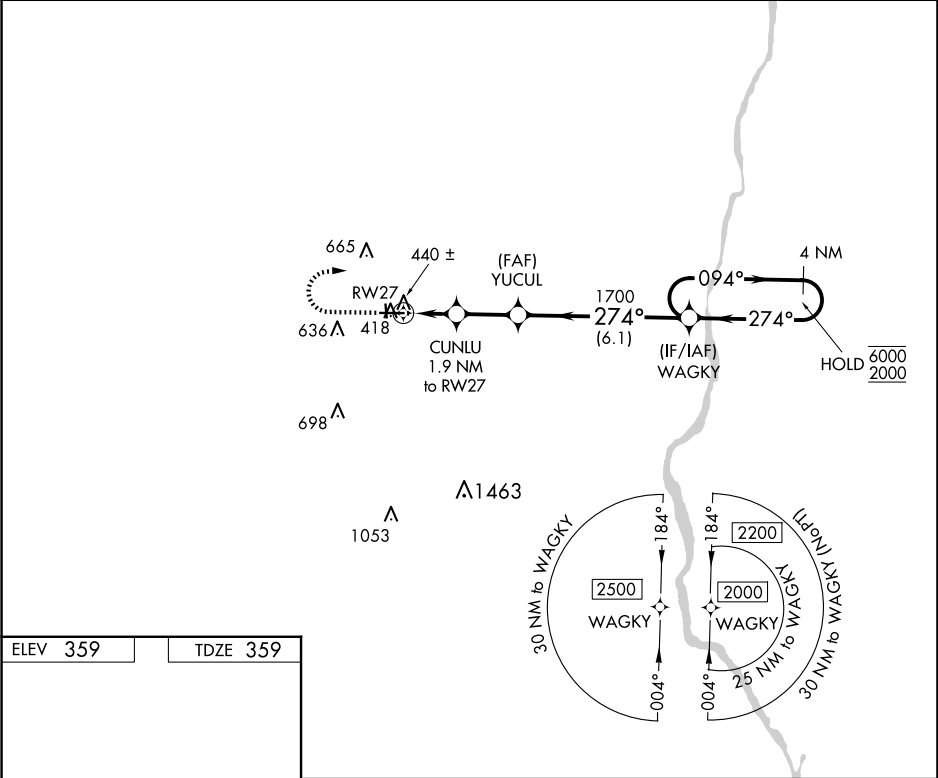


APP CRS	Rwy Idg	5002
274°	TDZE	359
	Apt Elev	359

RNAV (GPS) RWY 27

HEADLAND MUNI (HDL)

RNP APCH - GPS.		MISSED APPROACH: Climb to 900 then climbing right turn to 2000 direct WAGKY and hold.
Cairns NA to Rwy 17 and 35. Rwy 27 helicopter visibility reduction below 1 SM NA. Straight-in Rwy 27 NA at night, Circling Rwy 27 NA at night.		
AWOS-3PT 119.575	CAIRNS APP CON★ 125.4	CTAF 122.90



900	2000	WAGKY	VGSI and descent angle not coincident (VGSI Angle 3.50/TCH 40).		4 NM Holding Pattern	
RW27			YUCUL		WAGKY	
1.9 NM			2.2 NM		6.1 NM	
1000			1700		094° → 6000 ← 274° 2000	
CATEGORY	A		B		C	D
LNAV MDA	720-1 361 (400-1)					NA
CIRCLING	860-1 501 (600-1)	940-1 581 (600-1)	980-1¾ 621 (700-1¾)		NA	