

APP CRS  
**348°**

Rwy Idg  
TDZE  
Apt Elev

**6004**  
**360**  
**364**

**RNAV (GPS) RWY 35**

MOUNT PLEASANT RGNL (OSA)

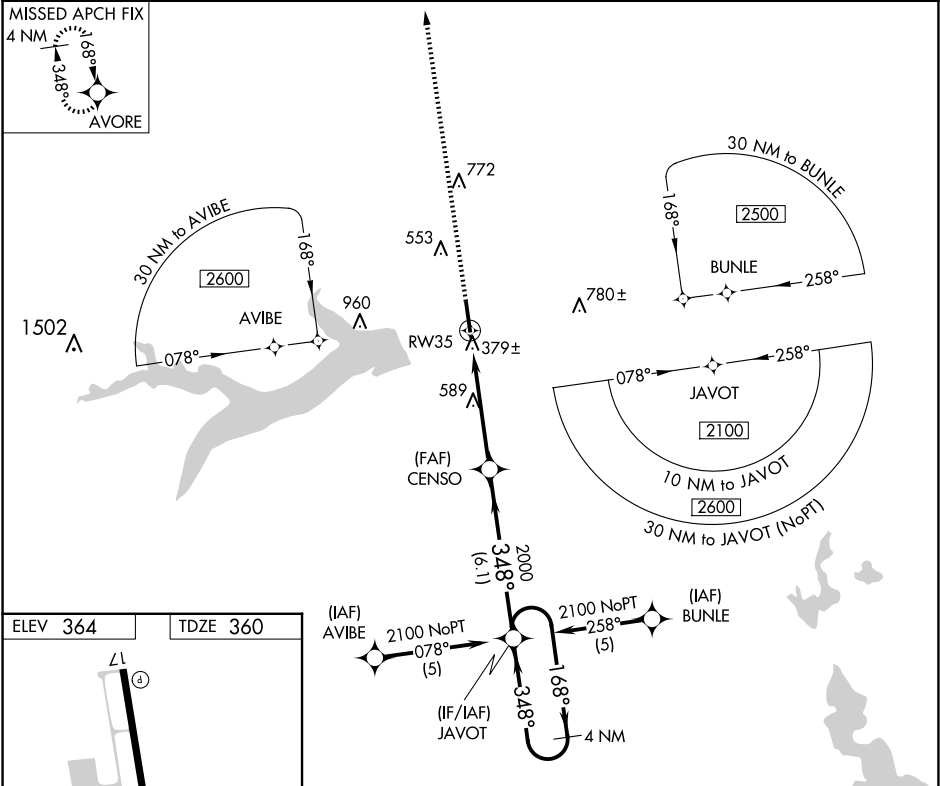
▼

▲

For uncompensated Baro-VNAV systems, LNAV/VNAV NA below -15°C (5°F) or above 48°C (118°F). DME/DME RNP-0.3 NA. When local altimeter setting not received, use Paris altimeter setting and increase all DA/MDA 120 feet, increase LNAV/VNAV visibilities ½ mile all Cats, LNAV visibilities ¼ mile all Cats and circling visibilities ¼ mile all Cats. VDP and Baro-VNAV NA when using Paris altimeter setting.

MISSED APPROACH: Climb to 2000 direct AVORE and hold.

AWOS-3 <b>119.775</b>	FORT WORTH CENTER <b>132.025 360.75</b>	UNICOM <b>122.7 (CTAF) 0</b>
--------------------------	--	---------------------------------



ELEV 364	TDZE 360	<div>2000 AVORE</div> <div><div><div>2100 NoPT</div><div>2100 NoPT (5)</div><div>2100 NoPT (5)</div></div><div><div>2100 NoPT</div><div>2100 NoPT (5)</div><div>2100 NoPT (5)</div></div></div> <div><div>4 NM Holding Pattern</div><div>GP 3.00° TCH 44</div></div>			
<div>35</div> <div>348° to RW35</div>		<div>1.6</div> <div>3.4 NM</div> <div>6.1 NM</div>			
CATEGORY	A	B	C	D	
LNAV/VNAV DA	700-1¼		340 (400-1¼)		
LNAV MDA	900-1	540 (600-1)	900-1½ 540 (600-1½)	900-1¾ 540 (600-1¾)	
CIRCLING	900-1	536 (600-1)	1040-2 676 (700-2)	1040-2¼ 676 (700-2¼)	