

WAAS CH 97316 W19A	APP CRS 193°	Rwy Idg TDZE Apt Elev	6000 488 488
--	------------------------	-----------------------------	---

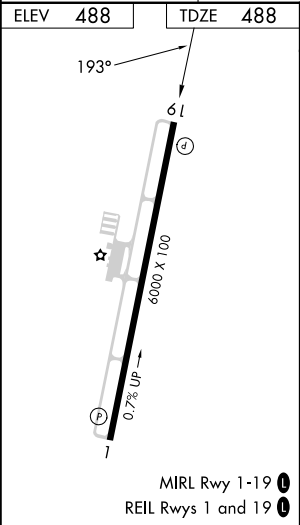
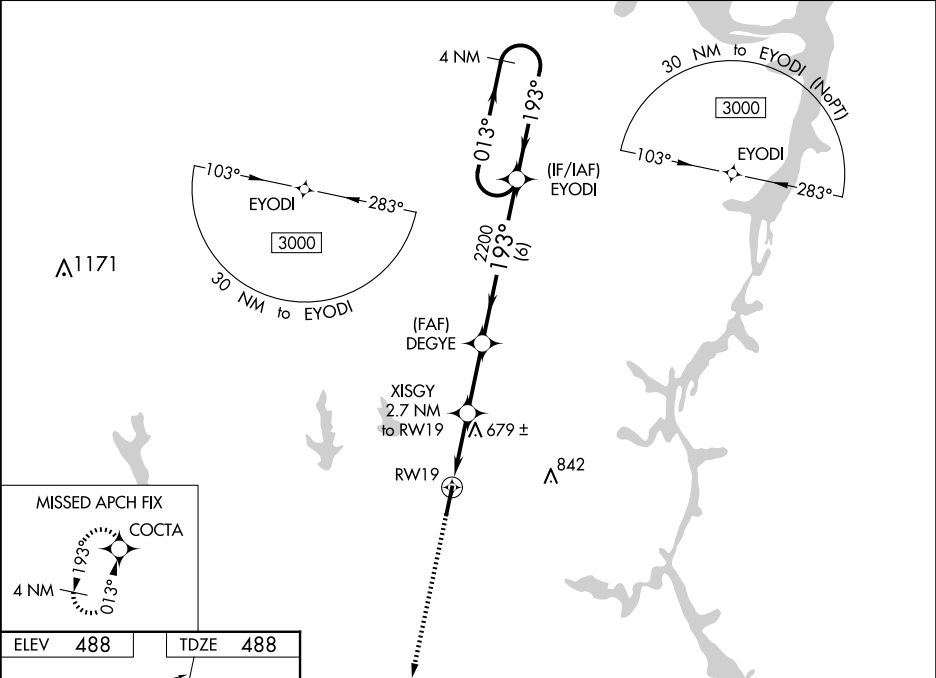
RNAV (GPS) RWY 19

BEECH RIVER RGNL (PVE)

⚠ For uncompensated Baro-VNAV systems, LNAV/VNAV NA below -15°C (5 °F) or above 54 °C (130°F).
DME/DME RNP-0.3 NA. When local altimeter setting not received, use Jackson altimeter setting: increase LPV all Cats DA to 828 and all Cats visibility ¼ mile; increase LNAV/VNAV all Cats DA to 890 and all Cats visibility ⅓ mile; increase all MDA 100 feet and LNAV Cats C/D and Circling Cat C visibility ¼ mile and Circling Cat D visibility ½ mile. VDP and Baro-VNAV NA when using Jackson altimeter setting.

MISSED APPROACH:
Climb to 3000 direct
COCTA and hold.

AWOS-3 118.125	MEMPHIS CENTER 125.85 379.25	UNICOM 123.0 (CTAF) 0
--------------------------	--	---------------------------------



3000 COCTA		VGSI and RNAV glidepath not coincident (VGSI Angle 3.29/TCH 30).		4 NM Holding Pattern	
*LNAV only		XISGY 2.7 NM to RW19		DEGYE 2200	
RW19		*1.2 NM to RW19		*1380	
1.2 NM		1.5 NM		2.6 NM	
6 NM		GP 3.00		TCH 40	
CATEGORY	A	B	C	D	
LPV DA	738-7/8		250 (300-7/8)		
LNAV/VNAV DA	800-1		312 (400-1)		
LNAV MDA	940-1	452 (500-1)	940-1 3/8	452 (500-1 3/8)	
CIRCLING	940-1 452 (500-1)	980-1 492 (500-1)	1000-1 1/2 512 (600-1 1/2)	1200-2 1/4 712 (800-2 1/4)	