

WAAS CH 90116 W01A	APP CRS 013°	Rwy Idg TDZE Apt Elev	6000 467 488
--	------------------------	-----------------------------	---

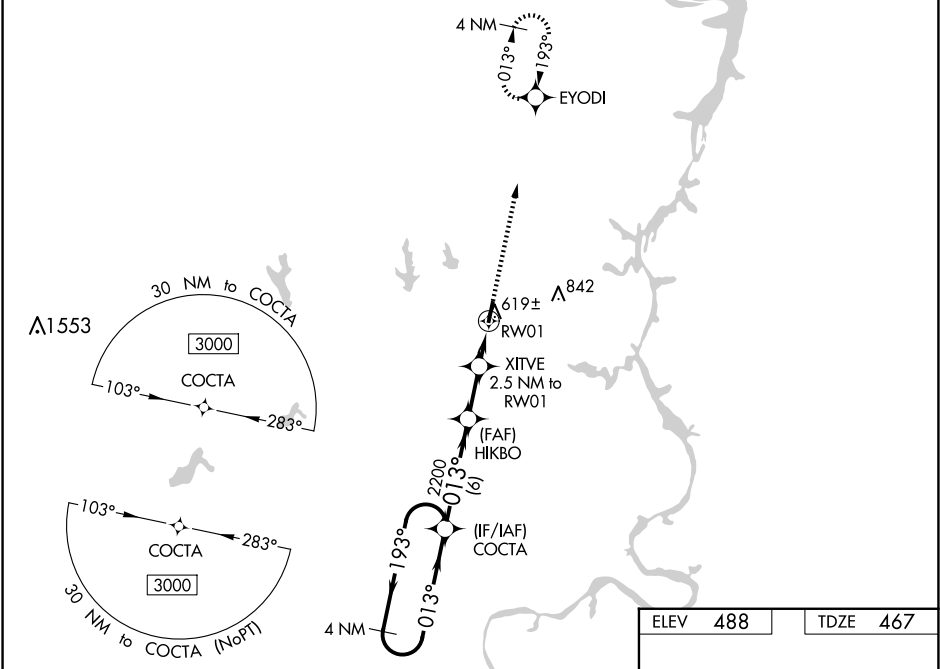
RNAV (GPS) RWY 1

BEECH RIVER RGNL (PVE)

⚠ For uncompensated Baro-VNAV systems, LNAV/VNAV NA below -15°C (5° F) or above 54°C (130°F).
⚠ DME/DMÉ RNP-0.3 NA. When local altimeter setting not received, use Jackson altimeter setting: increase LPV all Cats DA to 807 and all Cats visibility $\frac{3}{8}$ mile; increase LNAV/VNAV all Cats DA to 911 and all Cats visibility $\frac{3}{8}$ mile; increase all MDA 100 feet and LNAV Cats C/D and Circling Cat C visibility $\frac{1}{2}$ mile and Circling Cat D visibility $\frac{1}{2}$ mile. Baro-VNAV and VDP NA when using Jackson altimeter setting.

MISSED APPROACH:
Climb to 3000 direct EYODI and hold.

AWOS-3 118.125	MEMPHIS CENTER 125.85 379.25	UNICOM 123.0 (CTAF) 0
--------------------------	--	---------------------------------



VGSI and RNAV glidepath not coincident (VGSI Angle 3.09/TCH 37).				
4 NM Holding Pattern				
3000 ← 193° 013° → 013° 2200				
GP 3.00° TCH 40				
6 NM 2.9 NM 1.3 NM 1.2 NM				
CATEGORY	A	B	C	D
LPV DA	717- $\frac{7}{8}$		250 (300- $\frac{7}{8}$)	
LNAV/VNAV DA	821-1 $\frac{1}{4}$		354 (400-1 $\frac{1}{4}$)	
LNAV MDA	880-1	413 (400-1)	880-1 $\frac{1}{8}$	413 (400-1 $\frac{1}{8}$)
CIRCLING	940-1 452 (500-1)	980-1 492 (500-1)	1000-1 $\frac{1}{2}$ 512 (600-1 $\frac{1}{2}$)	1200-2 $\frac{1}{4}$ 712 (800-2 $\frac{1}{4}$)

