

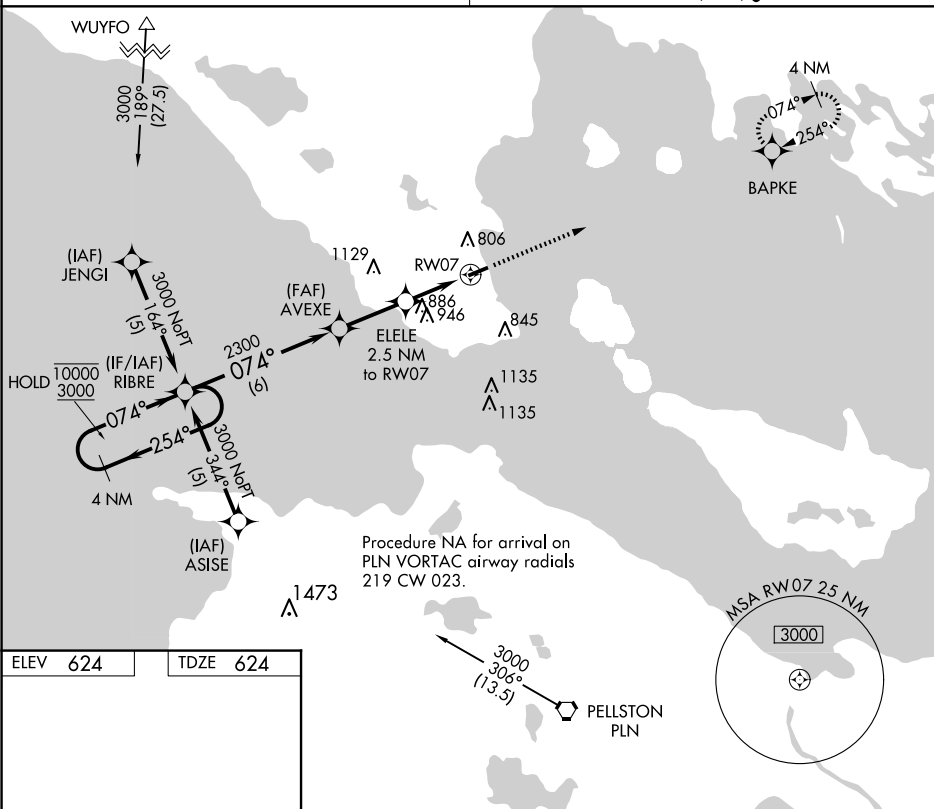
22223

RNAV (GPS) RWY 7

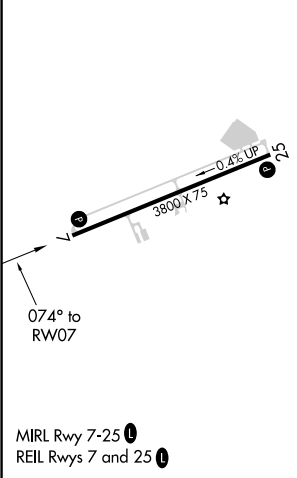
MACKINAC COUNTY (83D)

| | |
|-------------|---|
| T | Straight-in Rwy 07 NA at night, Circling Rwy 07 NA at night. |
| A NA | Rwy 07 helicopter visibility reduction below 1 SM NA. Circling NA at night south of Rwy 07-25. |

MISSED APPROACH: Climb to 3000
direct BAPKE and hold.

UN|COM
122.7 (CTAF) **L**

Downloaded from <http://ajph.org/> at University of California, San Diego on June 11, 2015



4 NM Holding Pattern

RIBRE

Visual Segment - Obstacles.

3000

BAPKE

10000 ← 254°

3000 → 074°

074°

AVEXE

ELELE
2.5 NM to RW07

2300

1460

RW07

6 NM

2.6 NM

2.5 NM

| CATEGORY | A | B | C | D |
|----------|--------|-------------|--|----|
| LNAV MDA | 1200-1 | 576 (600-1) | 1200-1 $\frac{1}{8}$ 576 (600-1 $\frac{1}{8}$) | NA |
| CIRCLING | 1260-1 | 636 (700-1) | 1300-2 676 (700-2) | NA |

MACKINAC COUNTY (83D)
RNAV (GPS) RWY 7

EC-1, 10 JUL 2025 to 07 AUG 2025