

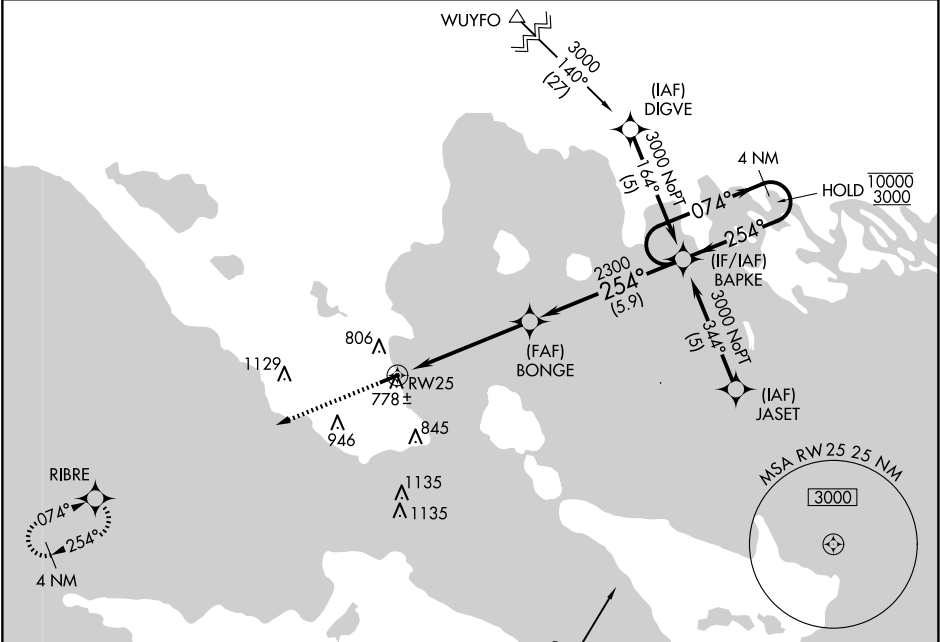
APP CRS	Rwy Idg	3800
254°	TDZE	623
	Apt Elev	624

RNAV (GPS) RWY 25

MACKINAC COUNTY (83D)

RNP APCH.	Circling Rwy 7 NA at night. Circling NA at night south of Rwy 7-25. Rwy 25 helicopter visibility reduction below ¾ SM NA.	MISSED APPROACH: Climb to 3000 direct RIBRE and hold.
NA		

MINNEAPOLIS CENTER	UNICOM
134.6 354.05	122.7 (CTAF) 0



ELEV 624

TDZE 623

3000

RIBRE

BAPKE

4 NM Holding Pattern

BONGE

1.3 NM to RW25

RW25

2300

074°

254°

10000

3000

3.04°

TCH 45

1.3

3.8 NM

5.9 NM

VGSI and descent angles not coincident (VGSI Angle 3.00/TCH 22).

CATEGORY	A	B	C	D
LNNAV MDA	1040-1	417 (500-1)	1040-1½ 417 (500-1½)	NA
CIRCLING	1260-1	636 (700-1)	1300-2 676 (700-2)	NA

MIRL Rwy 7-25 0

REIL Rws 7 and 25 0