

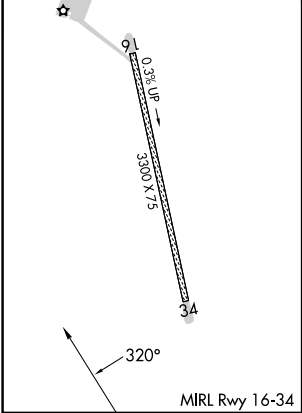
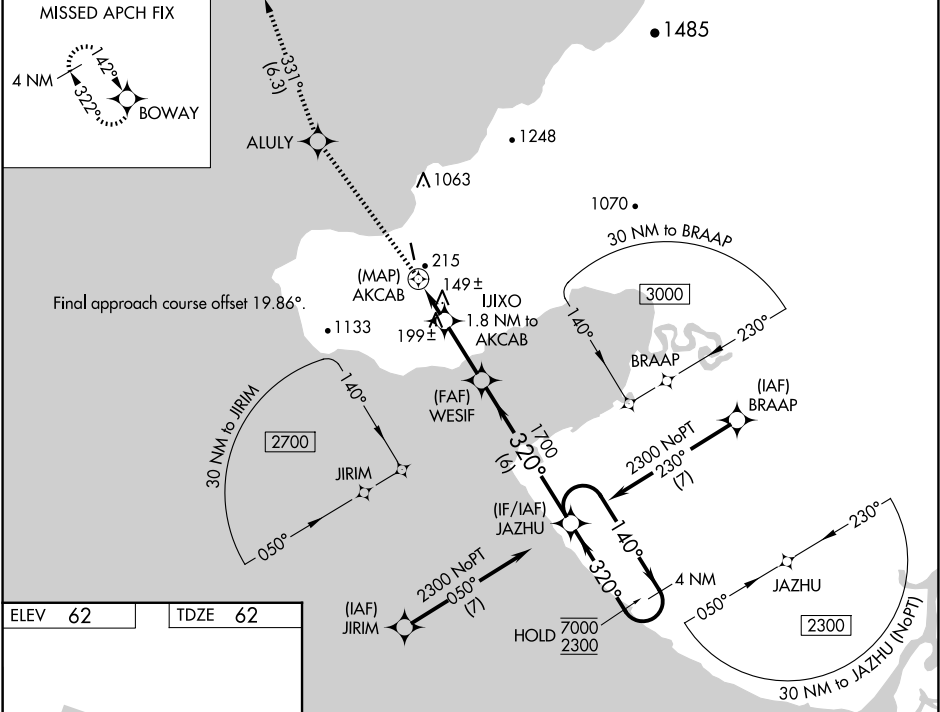
WAAS CH <b>86845</b> <b>W34A</b>	APP CRS <b>320°</b>	Rwy Idg TDZE Apt Elev	<b>3300</b> <b>62</b> <b>62</b>
--	------------------------	-----------------------------	---------------------------------------

RNAV (GPS) RWY 34

TUNUNAK (4KA) (POKA)

RNP APCH - GPS.	MISSED APPROACH: Climb to 500, then climb to 2400 direct ALULY then on track 331° to BOWAY and hold.
⚠ Circling NA east of Rwy 16-34. Rwy 34 helicopter visibility reduction below ¾ SM NA. When local altimeter setting not received, use Toksook Bay altimeter setting and increase all MDAs 20 feet and LNAV visibility Cat C ½ SM.	

AWOS-3P <b>118.25</b>	ANCHORAGE CENTER <b>125.2 372.0</b>	CTAF <b>122.9</b>
--------------------------	--	----------------------



500	2400	ALULY	tr 331°	BOWAY	JAZHU	4 NM Holding Pattern
↑	↑	✱	✱	✱	140° → 7000	← 320° 2300
<p>AKCAB 1.8 NM to AKCAB ≤3.00° TCH 40 900</p> <p>WESIF 1700</p> <p>0.7 1.8 NM 2.5 NM 6 NM</p>						
CATEGORY	A	B	C	D		
LP MDA	400-1 338 (400-1)				NA	
LNAV MDA	480-1 418 (500-1)		480-1½ 418 (500-1½)		NA	
CIRCLING	480-1 418 (500-1)		600-1 538 (600-1)		1120-3 1058 (1100-3) NA	

AK, 12 JUN 2025 to 07 AUG 2025

AK, 12 JUN 2025 to 07 AUG 2025