

WAAS CH 93524 W34A	APP CRS 345°	Rwy Idg TDZE Apt Elev	3200 71 71
--	------------------------	-----------------------------	---------------------------------------

RNAV (GPS) RWY 34

TOKSOOK BAY (00K)(PA00)

RNP APCH - GPS.

T Circling NA west of Rwy 16-34. When local altimeter setting not received,
A use Mekoryuk altimeter setting and increase all MDAs 100 feet.

MISSED APPROACH: Climb to 600 then climbing right turn to 2600 direct NECIC and hold.

AWOS-3P 119.275	ANCHORAGE CENTER 125.2 372.0	KENAI RADIO 122.6	CTAF 122.9 0
---------------------------	--	-----------------------------	------------------------

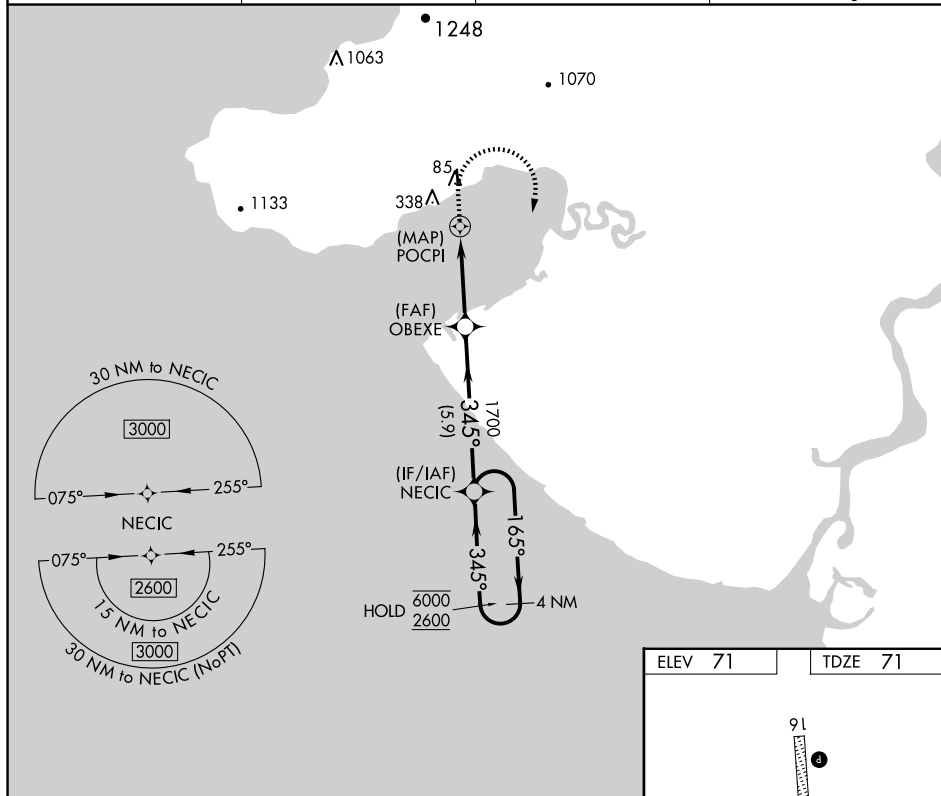








Diagram illustrating the layout of Runway 16-34. The runway is oriented 345°. The runway dimensions are 3200' x 75' with a 0.7% upward slope. The diagram shows the runway, taxiway, and parking areas with various markers and labels.

<div><div><div><div><div>600</div><div>↑</div></div></div><div><div><div>2600</div><div></div></div></div><div><div><div>NECIC</div><div></div></div></div></div><div><div><div>4 NM</div><div>Holding Pattern</div></div></div></div>					
<div><div><div><div><div>POCPI</div><div></div></div></div><div><div><div>OBEXE</div><div></div></div></div><div><div><div>NECIC</div><div></div></div></div></div><div><div><div>3.00°</div><div>TCH 30°</div></div><div><div>345°</div><div>1700</div></div><div><div>165°</div><div>6000</div></div><div><div>345°</div><div>2600</div></div></div><div><div><div>1.5 NM</div><div>3.6 NM</div><div>5.9 NM</div></div></div></div>					
CATEGORY	A		B	C	D
LP MDA	340-1¾ 269 (300-1¾)			NA	
LNAV MDA	420-1¾ 349 (400-1¾)			NA	
 CIRCLING	460-1¾ 389 (400-1¾)	540-1¾ 469 (500-1¾)		NA	