

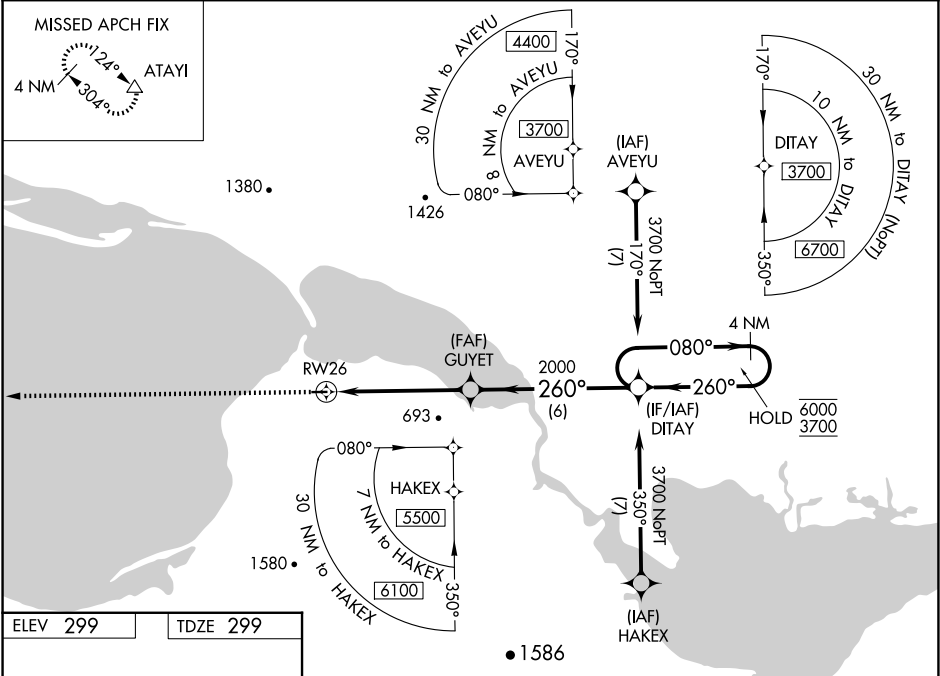
WAAS CH 97543 W26A	APP CRS 260°	Rwy Idg TDZE Apt Elev	2983 299 299
--	------------------------	-----------------------------	---

RNAV (GPS) RWY 26

TELLER (TER) (PATE)

RNP APCH.	MISSED APPROACH: Climb to 4000 direct ATAYI and hold.
<div><div><div></div><div></div><div></div></div><div>-35°C</div></div>	

AWOS-3P 118.375	ANCHORAGE CENTER 133.3 290.4	NOME RADIO 135.6	CTAF 123.0
---------------------------	--	----------------------------	----------------------



ELEV 299	TDZE 299
----------	----------

<div><div><div></div><div>4000</div><div>ATAYI</div></div><div><div>*LNAV only</div><div>GUYET</div><div>2000</div><div>260°</div><div>2000</div><div>2.2 NM to RW26</div><div>RW26</div><div>260°</div><div>2983 X 60</div><div>0.6% UP</div></div></div>				
<div><div>DITAY</div><div>4 NM Holding Pattern</div><div>080° → 6000</div><div>← 260° 3700</div><div>GP 3.04°</div><div>TCH 40</div></div>				
CATEGORY	A	B	C	D
LPV DA	549-1	250 (300-1)		NA
LNAV/VNAV DA	549-1	250 (300-1)		NA
LNAV MDA	1060-1 761 (800-1)	1060-1¼ 761 (800-1¼)	1060-2½ 761 (800-2½)	NA
CIRCLING	1060-1 761 (800-1)	1060-1¼ 761 (800-1¼)	1060-2¾ 761 (800-2¾)	NA

MIRL Rwy 8-26

AK, 12 JUN 2025 to 07 AUG 2025

AK, 12 JUN 2025 to 07 AUG 2025