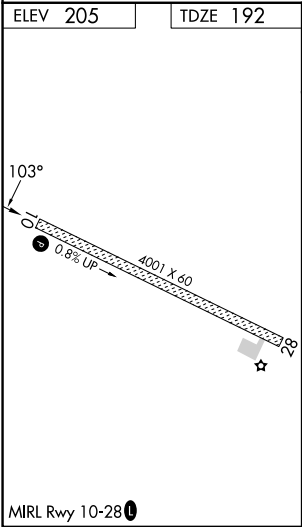
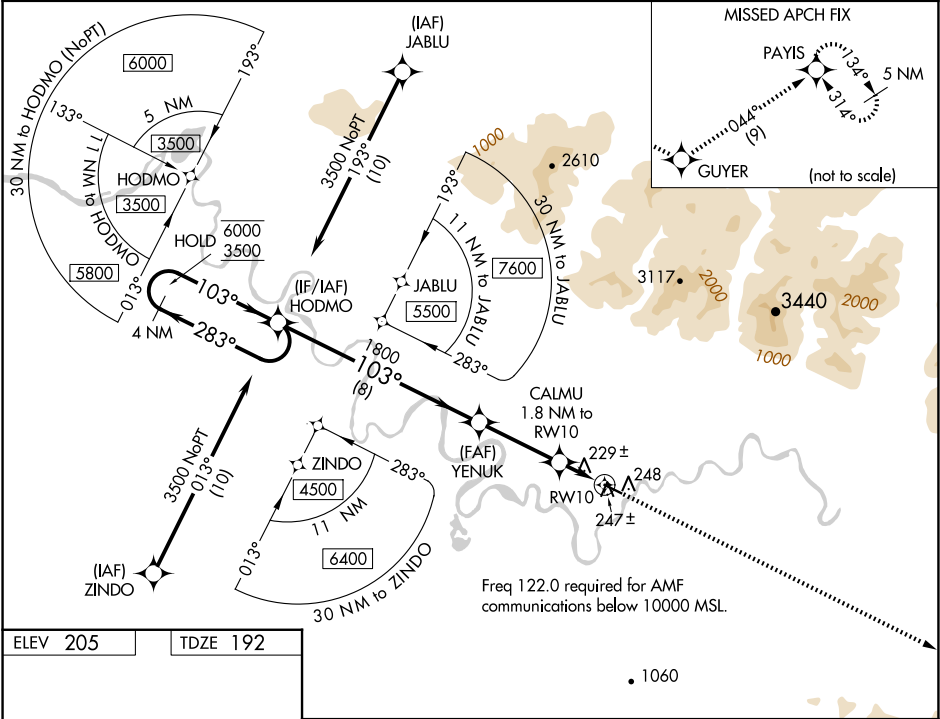


WAAS CH <b>50226</b> <b>W10A</b>	APP CRS <b>103°</b>	Rwy Idg TDZE Apt Elev	<b>4001</b> <b>192</b> <b>205</b>
--	------------------------	-----------------------------	---

RNAV (GPS) RWY 10

SHUNGNAK (SHG)(PAGH)

RNP APCH		MISSED APPROACH: Climb to 6000 direct GUYER and on track 044° to PAYIS and hold, continue climb-in-hold to 6000.	
Circling to Rwy 28 NA at night. -35°C			
AWOS-3P <b>118.525</b>	ANCHORAGE CENTER <b>119.2</b>	KOTZEBUE RADIO <b>122.0</b>	CTAF <b>122.7</b>



		HODMO		YENUK		6000 ↑		GUYER ✦		tr 044° ✦		PAYIS ✦	
		4 NM Holding Pattern											
6000 ← 283°						CALMU 1.8 NM to RW10							
3500 → 103°				1800 *		3.00° TCH 35		0.9 NM to RW10		RW10			
						780							
		8 NM		3.2 NM		0.9 NM		0.9 NM					
CATEGORY		A		B		C				D			
LP MDA		480-1		288 (300-1)						NA			
LNAV MDA		540-1		348 (400-1)						NA			
CIRCLING		600-1 395 (400-1)		660-1 455 (500-1)		660-1½ 455 (500-½)				NA			