

APP CRS
253°

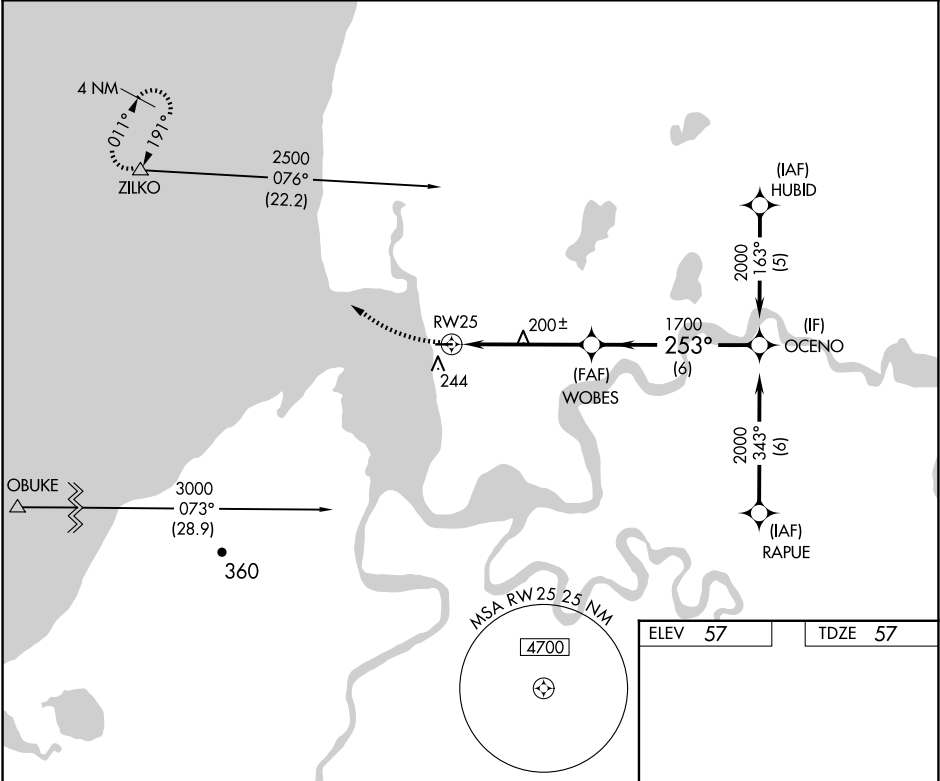
Rwy Idg 3280
TDZE 57
Apt Elev 57

RNAV (GPS) RWY 25
PILOT POINT (PNP)(PAPN)

DME/DME RNP-0.3 NA. When local altimeter setting not received, use King Salmon altimeter setting and increase all MDA 180 feet.

MISSED APPROACH: Climbing right turn to 2500 direct ZILKO and hold.

AWOS-3P 118.375	ANCHORAGE CENTER 132.9 288.3	CTAF 122.9 0
--------------------	---------------------------------	-----------------



2500

ZILKO

Visual Segment - Obstacles.

OCENO

WOBES

253°

2000

1700

RW25

5 NM

6 NM

CATEGORY	A	B	C	D
LNAV MDA	540-1	483 (500-1)	NA	
CIRCLING	600-1	543 (600-1)	NA	

0.6% UP → 3280 X 75

253° to RW25

MIRL Rwy 7-25 0