

APP CRS	Rwy Idg	4001
327°	TDZE	24
	Apt Elev	24

RNAV (GPS) RWY 33

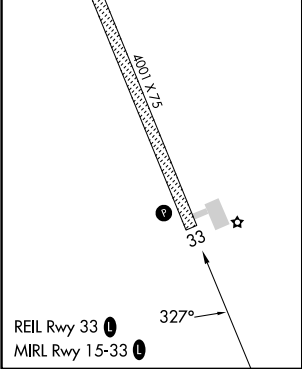
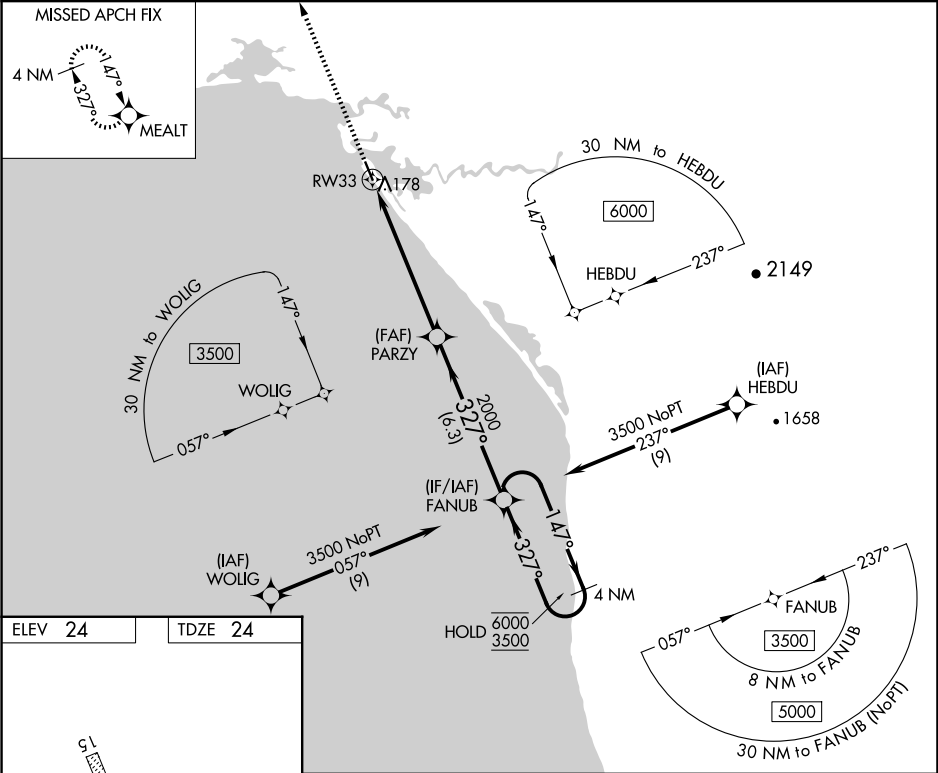
SHAKTOOLIK (2C7) (PFSH)

RNP APCH - GPS.

When local altimeter setting not received, use Unalakleet altimeter setting and increase all MDA 80 feet and increase LNAV Cat C and D and Circling Cat D visibility ½ SM.

MISSED APPROACH: Climb to 3000 direct MEALT and hold.

AWOS-3P 124.175	ANCHORAGE CENTER 135.7 335.5	NOME RADIO 122.3	UNICOM 122.8 (CTAF) 0
--------------------	---------------------------------	---------------------	--------------------------



3000	MEALT	VGSI and descent angles not coincident (VGSI Angle 3.00/TCH 25).			
↑	✦				
		PARZY	FANUB	4 NM Holding Pattern	
		1.2 NM to RW33	4.9 NM	6.3 NM	
		1.2 NM	4.9 NM	6.3 NM	
CATEGORY	A	B	C	D	
LNAV MDA	440-1	416 (500-1)	440-1½	416 (500-1½)	
CIRCLING	480-1	456 (500-1)	480-1½	740-2¼	
			456 (500-1½)	716 (800-2¼)	