

| | | |
|--|------------------------|---|
| WAAS CH 63013 W15A | APP CRS 147° | Rwy Idg 4001 TDZE 21 Apt Elev 24 |
|--|------------------------|---|

RNAV (GPS) RWY 15

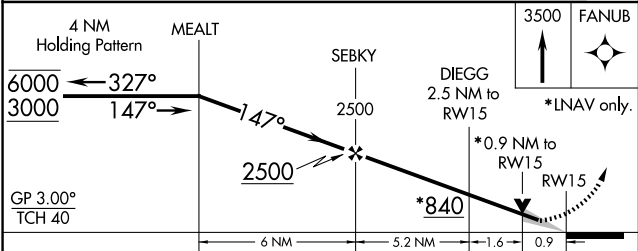
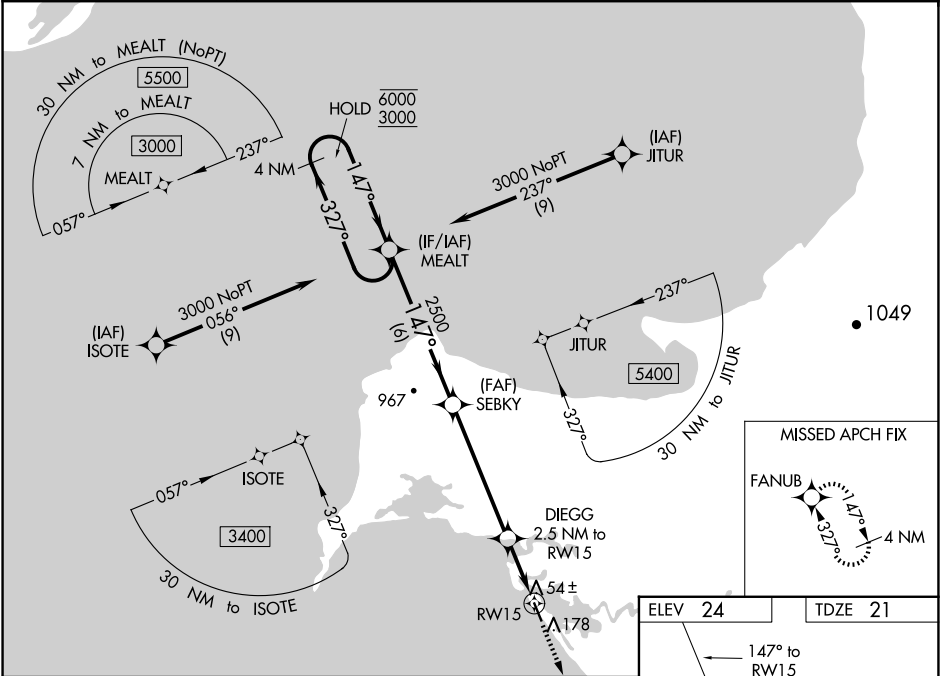
SHAKTOOLIK (2C7) (PFSH)

RNP APCH.

Baro-VNAV and VDP NA when using Unalakleet altimeter setting. For uncompensated Baro-VNAV systems, LNAV/VNAV NA below -20°C or above 54°C. When local altimeter setting not received use Unalakleet altimeter setting and increase all DA 72 feet and all MDA 80 feet; increase LNAV Cats C and D visibility ¼ SM, and Circling Cat D visibility ¼ SM.

MISSED APPROACH: Climb to 3500 direct FANUB and hold, continue climb-in-hold to 3500.

| | | | |
|---------------------------|--|----------------------------|-------------------------------|
| AWOS-3P 124.175 | ANCHORAGE CENTER 135.7 335.5 | NOME RADIO 122.3 | UNICOM 122.8 (CTAF) |
|---------------------------|--|----------------------------|-------------------------------|



| CATEGORY | A | B | C | D |
|--------------|-------------------|---------------------|---------------------|---|
| LPV DA | 271-1 | 250 (300-1) | | |
| LNAV/VNAV DA | 271-1 | 250 (300-1) | | |
| LNAV MDA | 360-1 | 339 (400-1) | | |
| CIRCLING | 480-1 456 (500-1) | 480-1½ 456 (500-1½) | 740-2¼ 716 (800-2¼) | |

