

WAAS CH 77807 W21A	APP CRS 211°	Rwy Idg TDZE 658 Apt Elev 658
--	------------------------	---

RNAV (GPS) RWY 21

RUBY (RBY) (PARY)

⚠

⚠

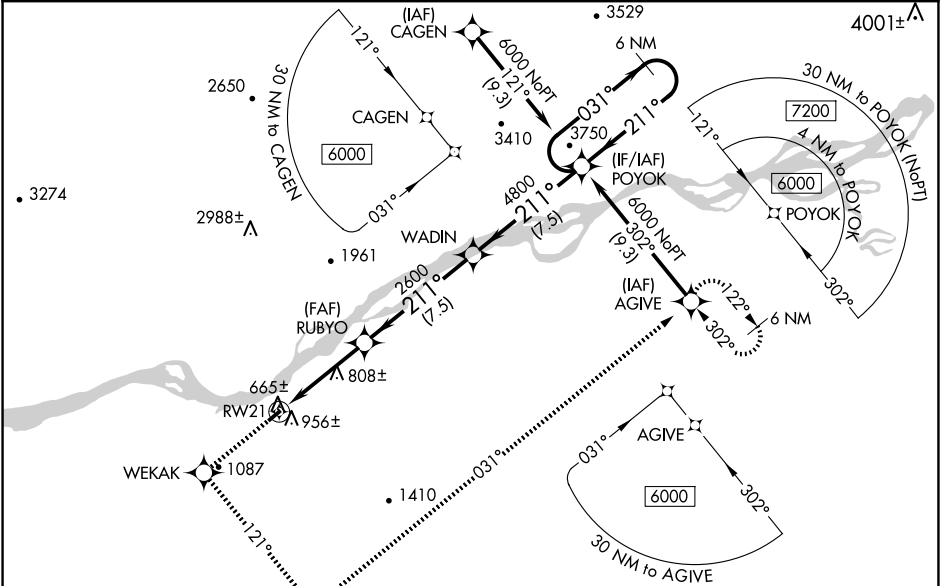
❄

-39°C

Baro-VNAV NA when using Galena altimeter setting. For uncompensated Baro-VNAV systems, LNAV/VNAV NA below -16°C (4°F) or above 54°C (130°F). DME/DME RNP-0.3 NA. Visibility reduction by helicopters NA. When local altimeter setting not received, use Galena altimeter setting and increase all DA/MDA 340 feet and all visibilities 1 SM.

MISSED APPROACH: Climb to 6000 direct WEKAK and left turn via 121° track to JUNUB and via 031° track to AGIVE and hold.

AWOS-3P 118.25	ANCHORAGE CENTER 127.0 290.2	FAIRBANKS RADIO 122.25	CTAF 122.8
--------------------------	--	----------------------------------	----------------------



6000

WEKAK

121° tr

JUNUB

031° tr

AGIVE

031°

VGSI and RNAV glidepath not coincident (VGSI Angle 3.00/TCH 30).

POYOK

6 NM Holding Pattern

WADIN

211°

RUBYO

2600

RW21

5.9 NM

GP 3.00° TCH 40

CATEGORY	A	B	C	D
LPV DA	919-1	261 (300-1)		NA
LNAV/VNAV DA	1199-2	541 (600-2)		NA
LNAV MDA	1220-1	562 (600-1)	1220-1½ 562 (600-1½)	NA
CIRCLING	1260-1 602 (700-1)	1400-1 742 (800-1)	1400-2¼ 742 (800-2¼)	NA

ELEV 658

TDZE 658

REIL Rwy 21

MIRL Rwy 3-21

211°

4000 X 100

0.25% UP