

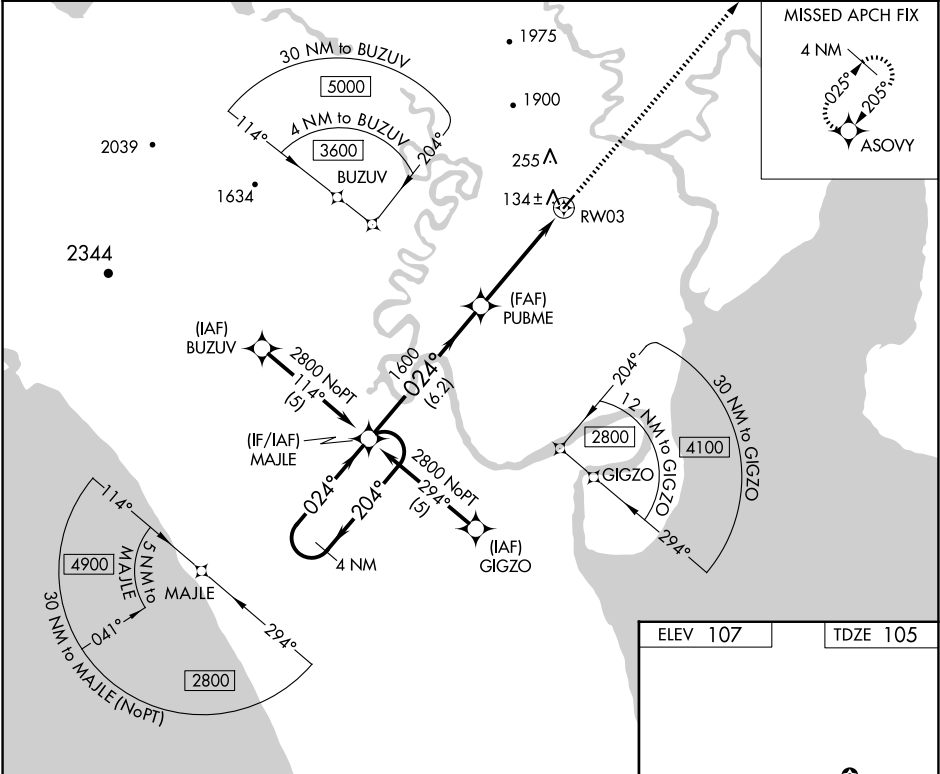
APP CRS	Rwy Idg	3300
024°	TDZE	105
	Apt Elev	107

RNAV (GPS) RWY 3  
MANOKOTAK (MBA) (PAMB)

**⚠** Circling NA northwest of Rwy 3 and 21. DME/DME RNP-0.3 NA. VDP NA when using Dillingham altimeter setting. When local altimeter setting not received use Dillingham altimeter setting and increase all MDA 40 feet and LNAV Cat D visibility ¼ SM. Rwy 3 helicopter visibility below 1 SM NA.

MISSED APPROACH: Climb to 3600 direct ASOVY and hold.

AWOS-3P 120.625	ANCHORAGE CENTER 132.75 282.35	CTAF 122.9 0
--------------------	-----------------------------------	-----------------



MISSED APCH FIX

4 NM

025° 205°

ASOVY

4 NM Holding Pattern MAJLE

2800 ← 204° 024° →

024°

PUBME

3600 ASOVY

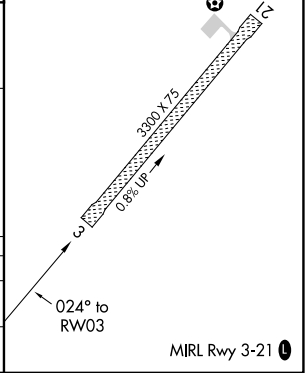
3.02° TCH 40

0.9 NM to RW03

1600

6.2 NM 3.7 NM 0.9

CATEGORY	A	B	C	D
LNAV MDA	400-1 295 (300-1)			
CIRCLING	540-1 433 (500-1)	560-1 453 (500-1)	560-1½ 453 (500-1½)	660-2 553 (600-2)



AK, 12 JUN 2025 to 07 AUG 2025

AK, 12 JUN 2025 to 07 AUG 2025