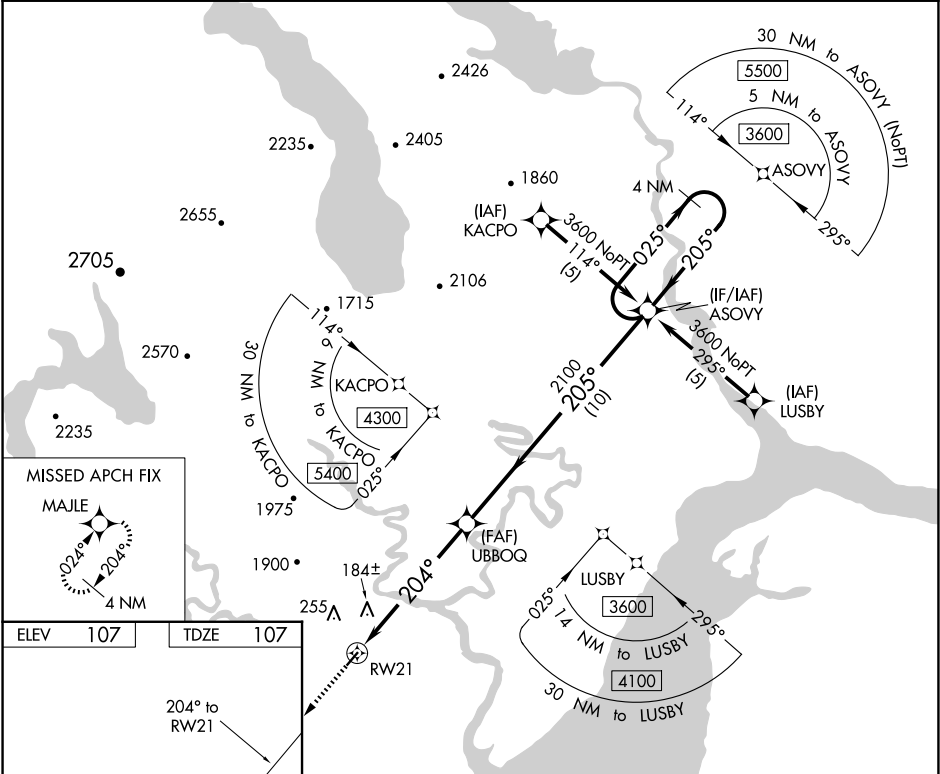


APP CRS	Rwy Idg	3300
204°	TDZE	107
	Apt Elev	107

RNAV (GPS) RWY 21
MANOKOTAK (MBA) (PAMB)

<p>⚠ Circling NA northwest of Rwy 3 and 21. DME/DME RNP-0.3 NA. VDP NA when using Dillingham altimeter setting. When local altimeter setting not received use Dillingham altimeter setting and increase all MDA 40 feet and increase LNAV Cat D visibility ¼ SM. Rwy 21 helicopter visibility below 1 SM NA.</p>	<p>MISSED APPROACH: Climb to 2800 direct MAJLE and hold.</p>
---	--

AWOS-3P 120.625	ANCHORAGE CENTER 132.75 282.35	CTAF 122.9
--------------------	-----------------------------------	---------------



	<div><div><div>2800</div><div>↑</div></div><div><div>MAJLE</div><div>✦</div></div></div> <div><div>UBBOQ</div><div>ASOVY</div><div>4 NM Holding Pattern</div></div> <div><div>0.9 NM to RW21</div><div>3.04° TCH 40</div><div>204°</div><div>205°</div><div>2100</div><div>025°</div><div>205°</div><div>3600</div></div> <div><div>0.9</div><div>5.1 NM</div><div>10 NM</div></div>			
CATEGORY	A	B	C	D
LNAV MDA	440-1 333 (400-1)			
CIRCLING	540-1 433 (500-1)	560-1 453 (500-1)	560-1½ 453 (500-1½)	660-2 553 (600-2)

MIRL Rwy 3-21

AK, 12 JUN 2025 to 07 AUG 2025

AK, 12 JUN 2025 to 07 AUG 2025