

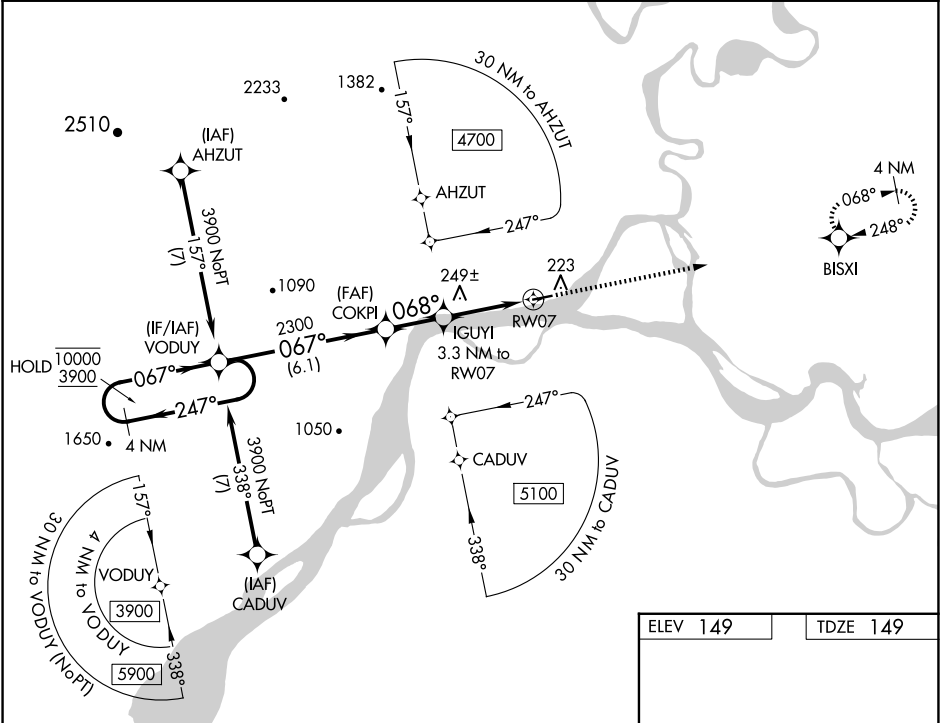
WAAS CH <b>42714</b> <b>W07A</b>	APP CRS <b>068°</b>	Rwy Ldg TDZE <b>149</b> Apt Elev <b>149</b>
--	------------------------	---



RNAV (GPS) RWY 7

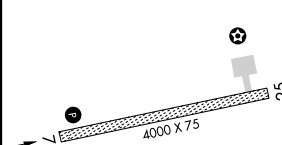
KOYUKUK (KYU) (PFKU)

RNP APCH-GPS.	
<div><div>▼</div><div>NA</div><div>❄️ -47°C</div></div> <div>Circling Rwy 25 NA at night. Rwy 7 helicopter visibility reduction below ¾ SM NA. Use Galena altimeter setting; when not received, procedure NA.</div>	MISSED APPROACH: Climb to 3700 direct BISXI and hold, continue climb-in-hold to 3700.

GAL/PAGA AWOS-3P <b>132.525</b>	ANCHORAGE CENTER <b>127.0 290.2</b>	CTAF <b>122.9 0</b>
------------------------------------	--	------------------------




VGSI and RNAV glidepath not coincident (VGSI Angle 4.00/TCH 29).					3700	BISXI
4 NM Holding Pattern						
10000 ← 247°		COKPI 2300				
3900 → 067°		IGUYI 3.3 NM to RW07				
GP 3.67°		2300 068° 1460				
TCH 55		RW07				
6.1 NM					2.1 NM	
3.3 NM					068°	
CATEGORY	A	B	C	D		
LPV DA	520-1 371 (400-1)				NA	
LNAV MDA	720-1 571 (600-1)		720-1½ 571 (600-1½)		NA	
CIRCLING	720-1 571 (600-1)	900-1 751 (800-1)	1320-3 1171 (1200-3)		NA	



4000 X 75

25

068°

REIL Rwy 7 

MIRL Rwy 7-25 