

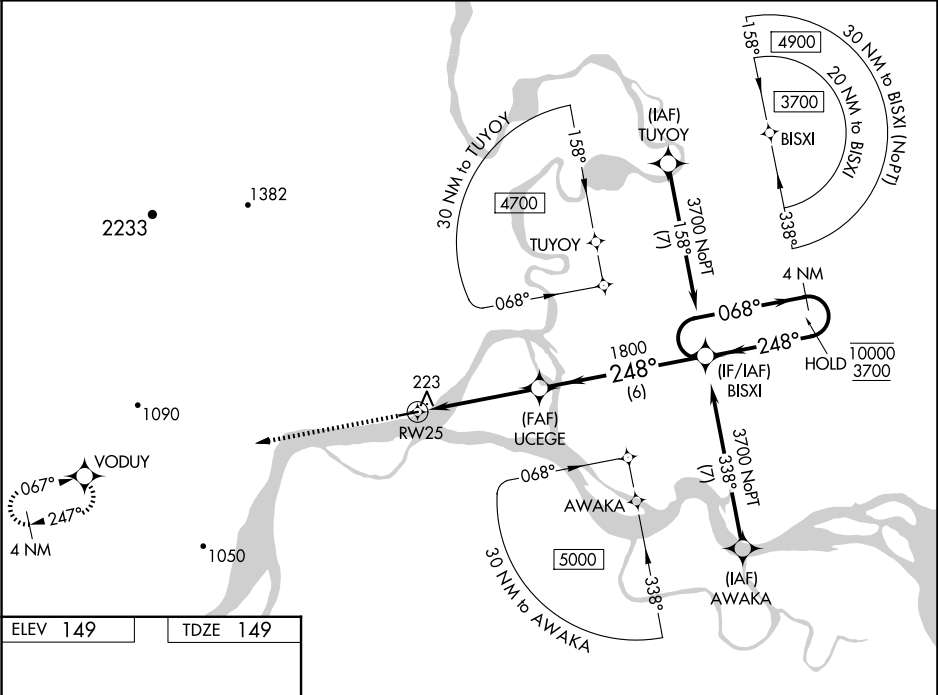
WAAS CH <b>99314</b> <b>W25A</b>	APP CRS <b>248°</b>	Rwy Ldg TDZE <b>149</b> Apt Elev <b>149</b>
--	------------------------	---

RNAV (GPS) RWY 25

KOYUKUK (KYU) (PFKU)

RNP APCH-GPS.	MISSED APPROACH: Climb to 4100 direct VODUY and hold, continue climb-in-hold to 4100.
▼ NA -47°C	Rwy 25 helicopter visibility reduction below 1 SM NA. Baro-VNAV NA. Use Galena altimeter setting; when not received, procedure NA. Straight-in Rwy 25 NA at night, Circling Rwy 25 NA at night.

GAL/PAGA AWOS-3P <b>132.525</b>	ANCHORAGE CENTER <b>127.0 290.2</b>	CTAF <b>122.9 0</b>
------------------------------------	--	------------------------



ELEV 149	TDZE 149	4100 VODUY	UCEGE	BISXI	4 NM Holding Pattern
		1800	1800	1800	10000 3700
		4.4 NM	6 NM		GP 3.39° TCH 55
CATEGORY	A	B	C	D	
LPV DA	471-1 322 (400-1)				NA
LNAV/VNAV DA	471-1 322 (400-1)				NA
LNAV MDA	720-1 571 (600-1)	720-1 571 (600-1 1/2)		NA	
CIRCLING	720-1 571 (600-1)	900-1 751 (800-1)	1320-3 1171 (1200-3)	NA	