

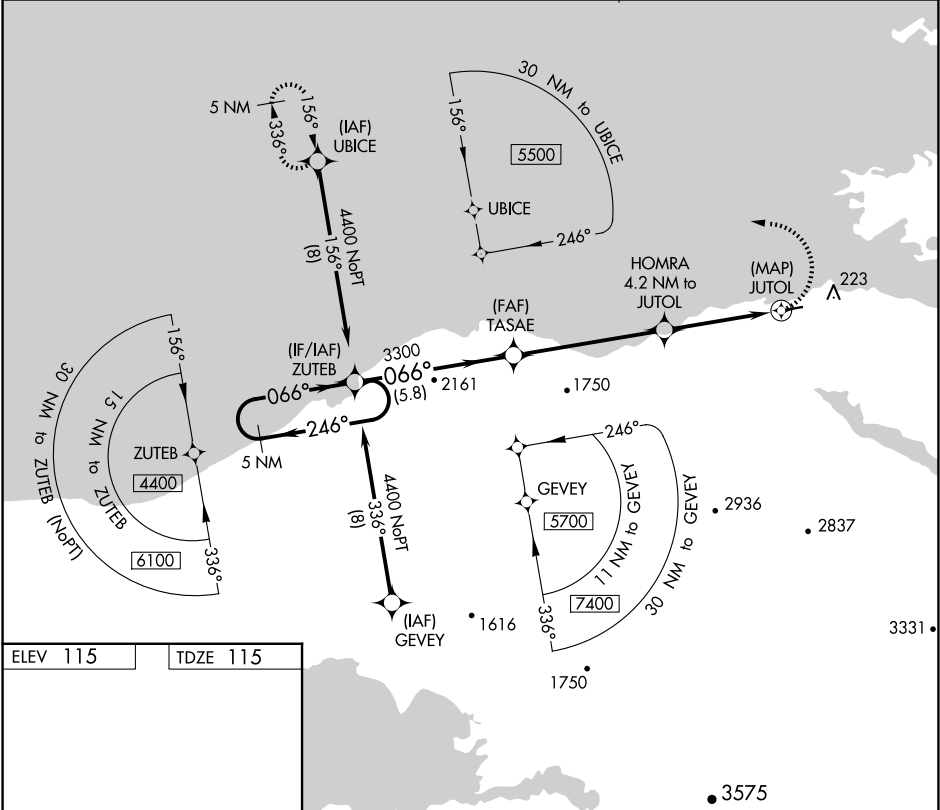
APP CRS	Rwy Idg	3300
066°	TDZE	115
	Apt Elev	115

RNAV (GPS) RWY 7

KOKHANOK (9K2) (PFFK)

<div><div>NA</div><div>Rwy 7 helicopter visibility reduction below 1 SM NA. DME/DME RNP-0.3 NA. Use Iliamna altimeter setting. Procedure NA at night.</div></div>	<div>MISSED APPROACH: Climbing left turn to 4400 direct UBICE and hold, continue climb-in-hold to 4400.</div>
---	---

III/PAIL ASOS 134.95	ANCHORAGE CENTER 118.8	CTAF 122.9
-------------------------	---------------------------	---------------



ELEV 115

TDZE 115

REIL Rwy 7 and 25

MIRL Rwy 7-25

Visual Segment - Obstacles.			
<div>5 NM Holding Pattern</div> <div>4400 ← 246° → 066° → 066° → 3300 → 1560 → JUTOL</div> <div>5.8 NM 5.5 NM 4.2 NM 0.2</div>			
CATEGORY	A	B	C
LNAV MDA	820-1	705 (800-1)	820-2
CIRCLING	1040-1¼ 925 (1000-1¼)	1100-1½ 985 (1000-1½)	1100-3 985 (1000-3)