

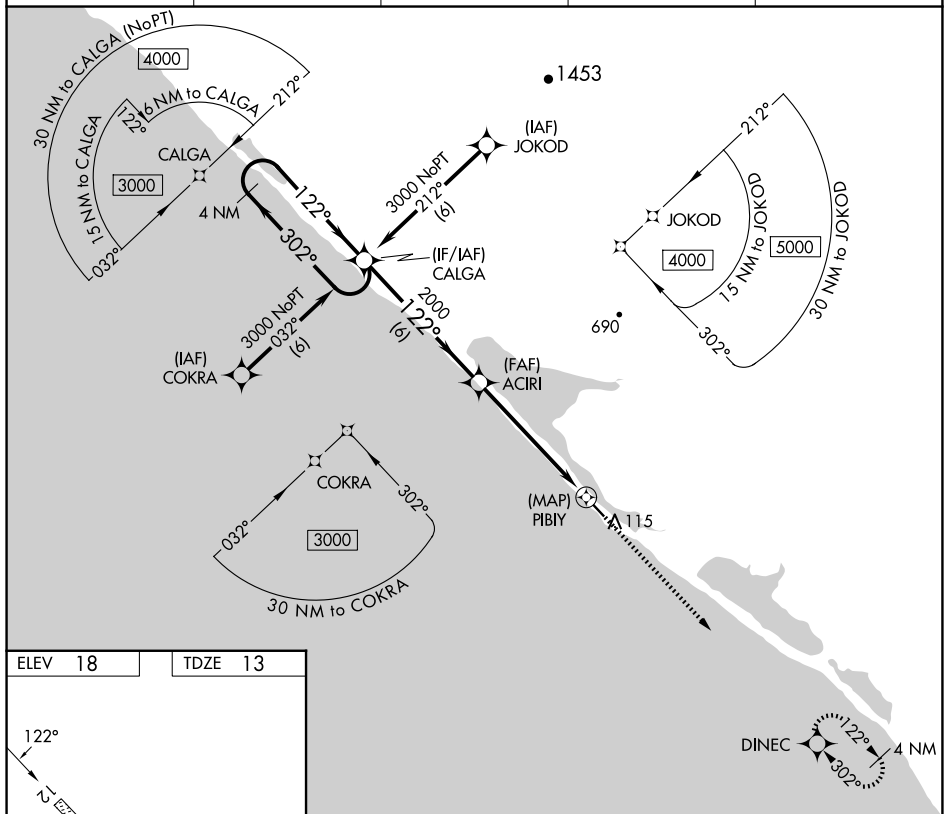
APP CRS 122°	Rwy Idg TDZE Apt Elev	3000 13 18
------------------------	-----------------------------	---------------------------------------

RNAV (GPS) RWY 12
KIVALINA (KVL)(PAVL)

V DME/DME RNP-0.3 NA. When local altimeter setting not received, use
A Noatak altimeter setting and increase all MDAs 340 feet and LNAV Cat C
✶ -34°C visibility 1 SM and Circling Cat B visibility ¼ SM, Cat C 1 ½ SM.

MISSED APPROACH: Climb to 3000, direct DINEC and hold.

ASOS 135.8	WTK/PAWN AWOS-3P 135.75	ANCHORAGE CENTER 119.2 263.0	KOTZEBUE RADIO 122.55	UNICOM 122.8 (CTAF) 1
----------------------	-----------------------------------	--	---------------------------------	--



ELEV	18		TDZE	13
------	----	--	------	----

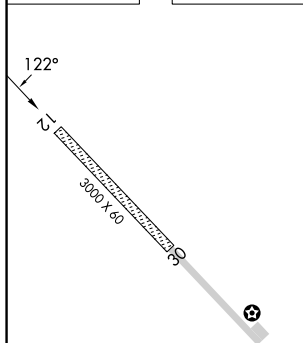
MIRL Rwy 12-30 **L**

Diagram illustrating the proposed flight path. The path starts at a 3000 ft altitude, turns 302° left and 122° right, then turns 122° right to a 2000 ft altitude. It then turns 3.06° right (TCH 40) and continues to a 0.4 NM distance. Key points include CALGA, ACIRI, and PIBY. A 4 NM Holding Pattern is shown at the start. A scale bar indicates 0.4 NM.