



APP CRS 018°	Rwy Ldg 3986 TDZE 181 Apt Elev 181
------------------------	---

RNAV (GPS) RWY 3

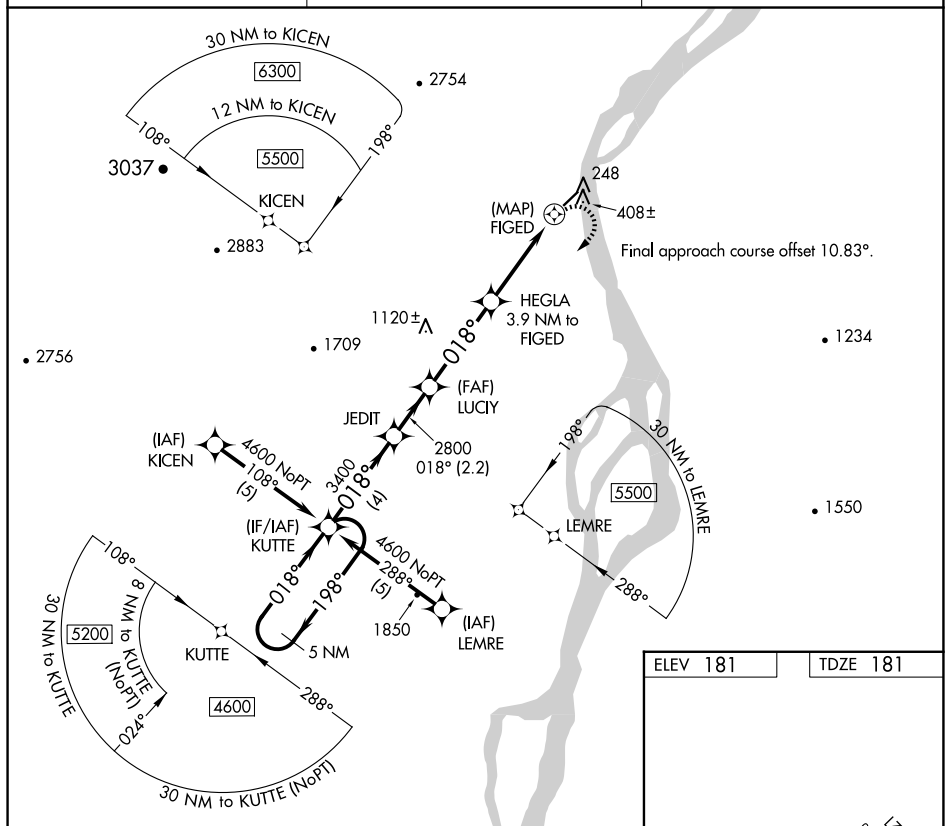
KALTAG (KAL)(PAKV)

	DME/DME RNP-0.3 NA.
	Helicopter visibility reduction below 1 SM NA.
 -31°C	Night Landing: Rwy 3 NA.

MISSED APPROACH: Climbing right turn to 4600 direct KUTTE and hold.

AWOS-3
135.25

ANCHORAGE CENTER
127.0 290.2

CTAF
122.9 **L**

The diagram shows a runway layout. A runway is depicted as a dashed line with a width of 100 feet and a length of 3086 feet. The runway is oriented at an angle of 18 degrees. A slope indicator shows a 0.3% upward slope. A large grey arrow points towards the runway. The diagram is labeled with 'ELEV 181' and 'TDZE 181'.

CATEGORY	A	B	C	D
UNAV MDA	1280-1¼ 1099 (1100-1¼)	1280-1½ 1099 (1100-1½)	1280-3 1099 (1100-3)	NA
CIRCLING	1280-1¼ 1099 (1100-1¼)	1280-1½ 1099 (1100-1½)	1280-3 1099 (1100-3)	NA

RNAV (GPS) RWY 3