

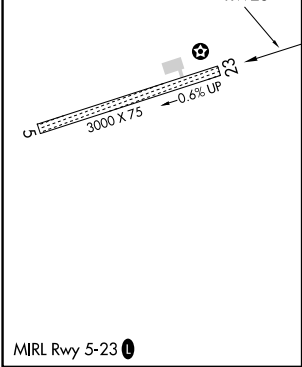
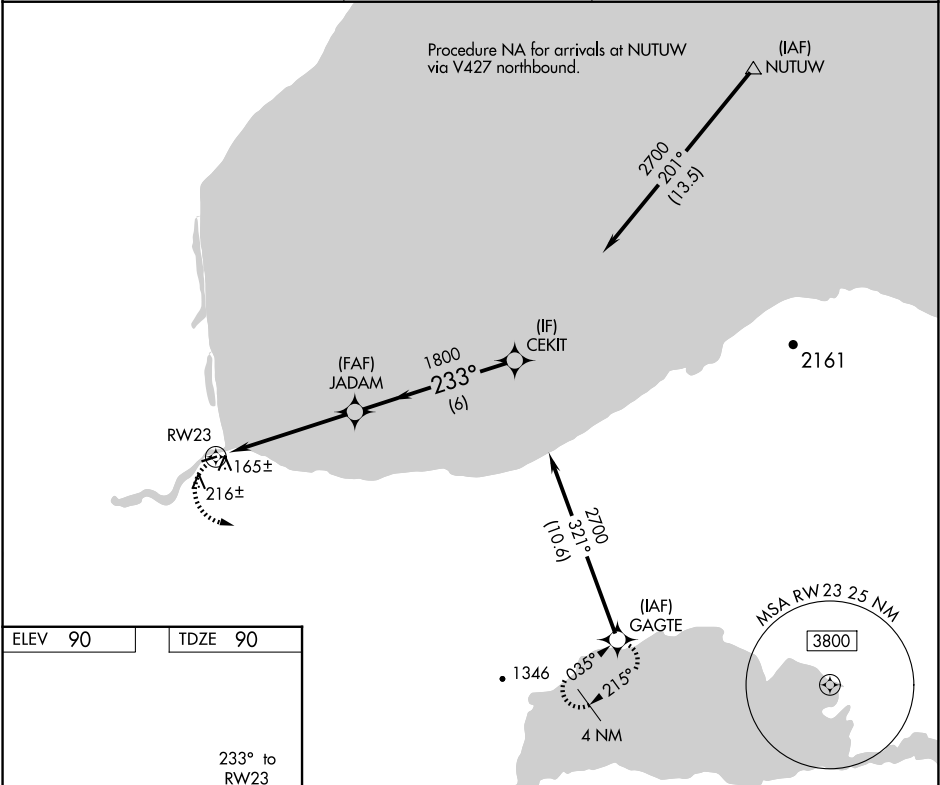
APP CRS	Rwy Idg	3000
233°	TDZE	90
	Apt Elev	90

RNAV (GPS) RWY 23

IGIUGIG (IGG)(PAIG)

RNP APCH-GPS.	MISSED APPROACH: Climbing left turn to 4000 direct GAGTE and hold.
<div><div></div><div></div></div> <div>If local altimeter setting not received, use Iliamna altimeter setting and increase all MDAs 120 feet.</div>	

AWOS-3P 119.925	ANCHORAGE CENTER 118.8	CTAF 122.8
--------------------	---------------------------	---------------



<div><div>4000</div><div>GAGTE</div></div>		* VDP NA with Iliamna altimeter setting.			
<div><div><div></div><div></div></div><div><div>JADAM</div><div>CEKIT</div><div>2700</div><div>233°</div><div>1800</div><div>3.04°</div><div>TCH 40</div><div>1.3</div><div>3.9 NM</div><div>6 NM</div><div>Procedure Turn NA</div></div></div>					
CATEGORY	A	B	C	D	
LNAV MDA	440-1 350 (400-1)			NA	
CIRCLING	580-1 490 (500-1)	660-1 570 (600-1)	NA		

AK, 12 JUN 2025 to 07 AUG 2025

AK, 12 JUN 2025 to 07 AUG 2025