

WAAS CH 86744 W36A	APP CRS 001°	Rwy Idg 3381 TDZE 299 Apt Elev 299
--	------------------------	---

RNAV (GPS) RWY 36

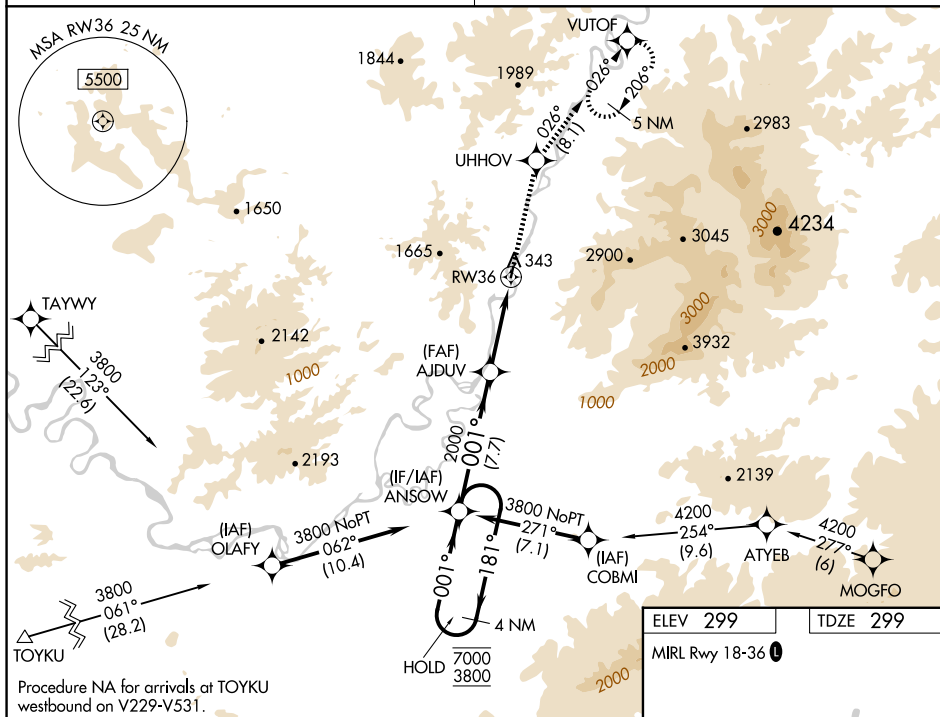
HUGHES (HUS) (PAHU)

RNP APCH-GPS.

T Rwy 36 helicopter visibility reduction below 1 SM NA. Procedure NA
A NA at night. Circling NA west of Rwy 18-36. Use Indian Mountain LRRS altimeter setting. When Indian Mountain LRRS altimeter setting not received, procedure NA.

MISSED APPROACH: Climb to 5000 direct UHHOV and on track 026° to VUTOF and hold, continue climb-in-hold to 5000.

ANCHORAGE CENTER
124.6 352

CTAF
122.9 **L**

4 NM Holding Pattern

ANSOW

7000 ← 181°

3800 → 001°

AJDUV

2000

3.00° ≥ TCH 40

RW36

7.7 NM

5.2 NM

5000 ↑

UHHOV

tr 026°

VUTOF

HUGHES, ALASKA
Orig 02DEC21

66°02'N-154°16'W

HUGHES (HUS) (PAHU)
RNAV (GPS) RWY 36