

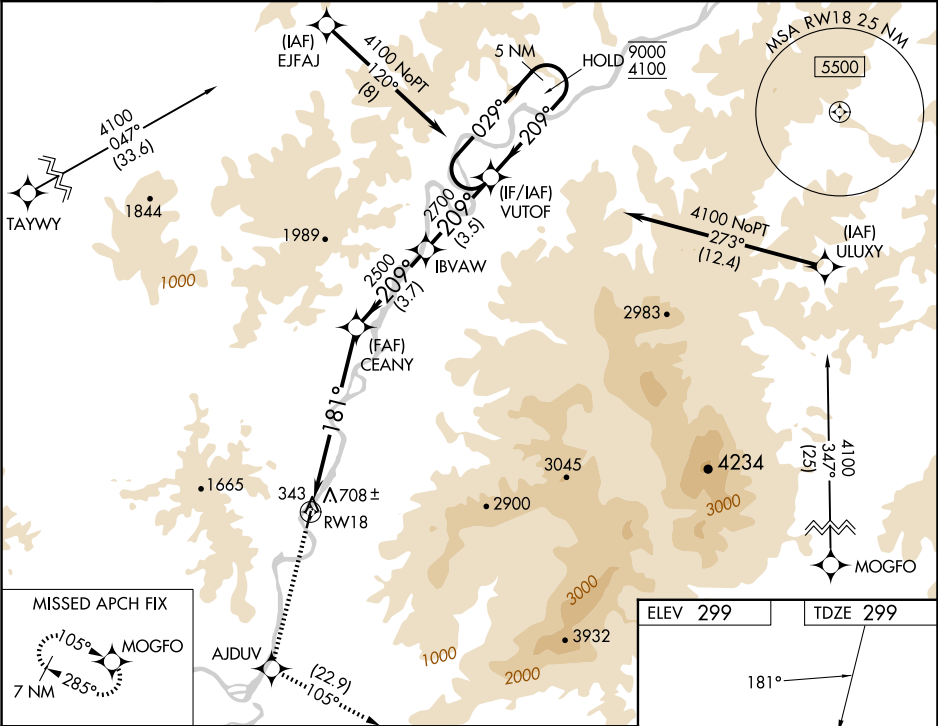
WAAS CH 81845 W18A	APP CRS 181°	Rwy Idg TDZE Apt Elev	3381 299 299
--	------------------------	-----------------------------	---

RNAV (GPS) RWY 18

HUGHES (HUS) (PAHU)

RNP APCH-GPS.	
<div><div>Procedure NA at night. Circling NA west of Rwy 18-36. Rwy 18 helicopter visibility reduction below 1 SM NA. Use Indian Mountain LRRS altimeter setting. When Indian Mountain LRRS altimeter setting not received, procedure NA.</div></div>	<div>MISSED APPROACH: Climb to 6300 direct AJDUV and on track 105° to MOGFO and hold, continue climb-in-hold to 6300.</div>

ANCHORAGE CENTER 124.6 352	CTAF 122.9
--------------------------------------	----------------------



6300

AJDUV

tr 105°

MOGFO

IBVAW

VUTOF

5 NM Holding Pattern

CEANY

3.00°

TCH 40

209°

2700

209°

029°

9000

4100

RW18

181°

2500

6.8 NM

3.7 NM

3.5 NM

CATEGORY	A	B	C	D
LP MDA	1120-1 821 (900-1)	1120-1¼ 821 (900-1¼)	1120-2½ 821 (900-2½)	NA
LNAV MDA	1180-1¼ 881 (900-1¼)		1180-2½ 881 (900-2½)	NA
CIRCLING	1260-1¼ 961 (1000-1¼)	1360-1½ 1061 (1100-1½)	1580-3 1281 (1300-3)	NA

