

APP CRS
204°

Rwy Ldg
TDZE
61

Apt Elev
61

RNAV (GPS) RWY 20

CHEVAK (VAK)(PAVA)

RNP APCH.

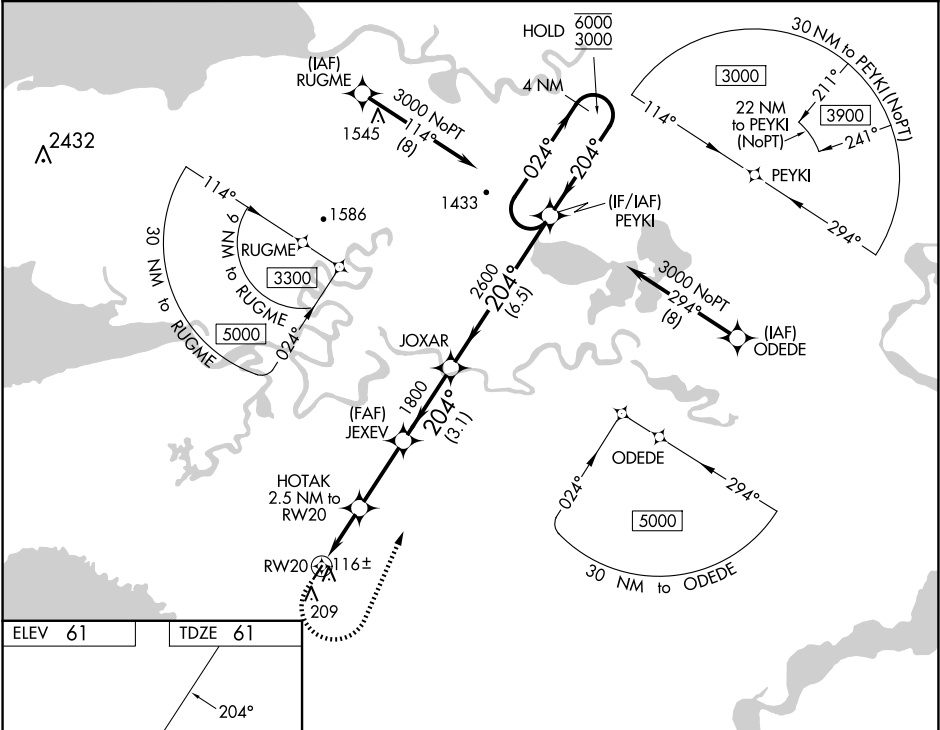
▼

▲

For uncompensated Baro-VNAV systems, LNAV/VNAV NA below -20°C or above 54°C.

MISSED APPROACH: Climb to 500. Then climbing left turn to 3000 direct PEYKI and hold.

AWOS-3P 120.625	ANCHORAGE CENTER 124.5	UNICOM 122.8 0	CTAF 123.0 0
---------------------------	----------------------------------	--------------------------	------------------------



ELEV 61

TDZE 61

0.28 up

3220 175

204°

500

3000

PEYKI

VGSI and RNAV glidepath not coincident (VGSI Angle 3.00/TCH 25).

4 NM Holding Pattern

*LNAV only

HOTAK 2.5 NM to RW20

RW20

1.1 NM to RW20

1.4 NM

2.9 NM

3.1 NM

6.5 NM

JEXEV

JOXAR

PEYKI

880*

1800

2600

6000

3000

024°

204°

GP 3.00°

TCH 40

CATEGORY	A	B	C	D
LNAV/VNAV DA		311-1	250 (300-1)	
LNAV MDA		420-1	359 (400-1)	
CIRCLING	520-1	459 (500-1)	520-1½ 459 (500-1½)	700-2 639 (700-2)