

JACKMAN, MAINE

AL-10110 (FAA)

25163

WAAS CH 97742 W13A	APP CRS 106°	Rwy Ldg 3601 TDZE 1178 Apt Elev 1178
----------------------------------------	------------------------	-----------------------------------------------------------------

APP CRS
106°

Rwy Ldg	3601
TDZE	1178
Apt Elev	1178

RNAV (GPS) RWY 13

NEWTON FLD (59B)

	RNP APCH - GPS.
--	-----------------



Procedure NA at night. Rwy 13 helicopter visibility reduction below 1 SM NA. When local altimeter setting not received, use Rangeley altimeter setting and increase all MDAs 200 feet and LP visibility Cat B/C ½ SM.

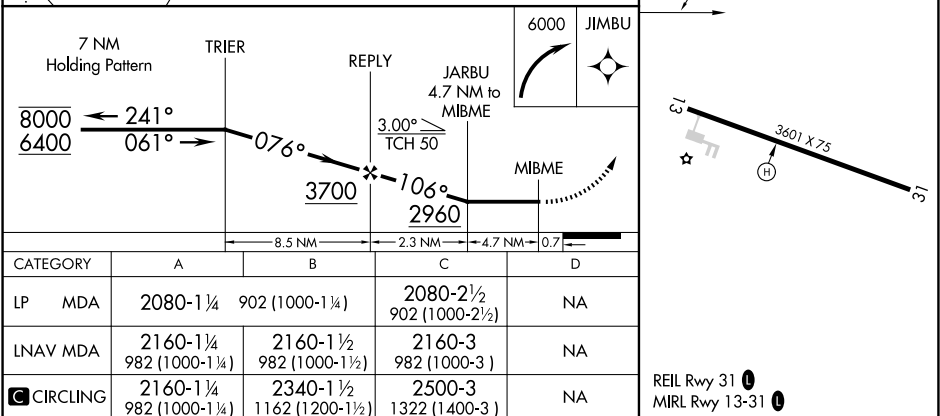
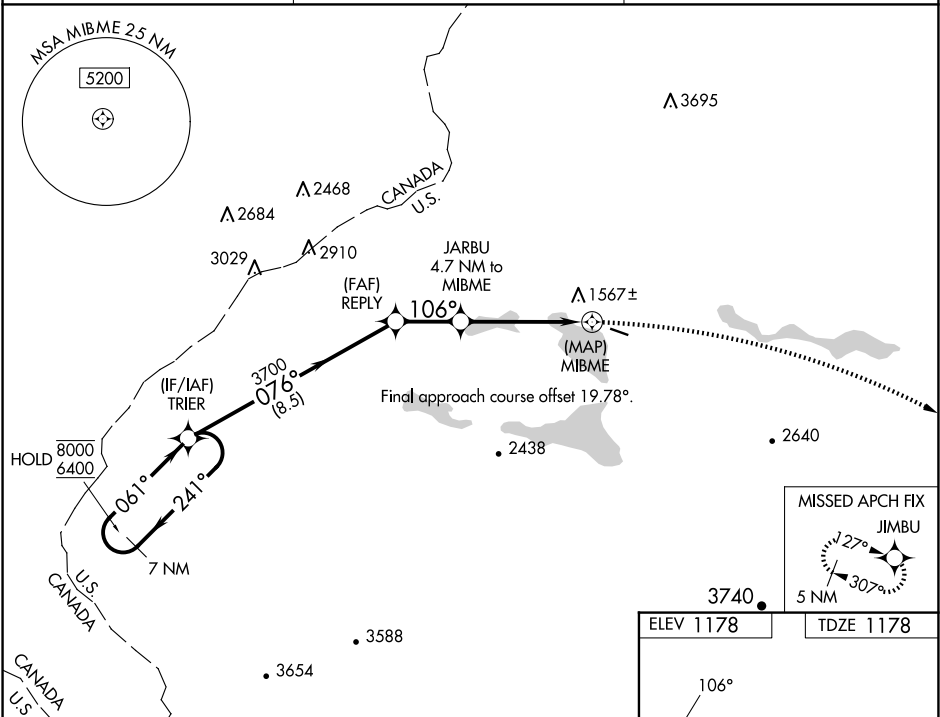


 -23°C

MISSED APPROACH: Climbing right turn to 6000 direct JIMBU and hold, continue climb-in-hold to 6000.

AWOS-3
122.9

BOSTON CENTER
120.25 346.4

CTAF
122.9 **L**

JACKMAN, MAINE
Amdt 1 03NOV22

45°38'N - 70°15'W

NEWTON FLD (59B)
RNAV (GPS) RWY 13

NE-1, 10 JUL 2025 to 07 AUG 2025

NE-1, 10 JUL 2025 to 07 AUG 2025