

APP CRS
003°

Rwy Idg	TDZE	Apt Elev
18L	10	10
18R	10	10
9	10	10
10	10	10
11	10	10
12	10	10
13	10	10
14	10	10
15	10	10
16	10	10
17	10	10
19	10	10
20	10	10
21	10	10
22	10	10
23	10	10
24	10	10
25	10	10
26	10	10
27	10	10
28	10	10
29	10	10
30	10	10
31	10	10
32	10	10
33	10	10
34	10	10
35	10	10
36	10	10
37	10	10
38	10	10
39	10	10
40	10	10
41	10	10
42	10	10
43	10	10
44	10	10
45	10	10
46	10	10
47	10	10
48	10	10
49	10	10
50	10	10
51	10	10
52	10	10
53	10	10
54	10	10
55	10	10
56	10	10
57	10	10
58	10	10
59	10	10
60	10	10
61	10	10
62	10	10
63	10	10
64	10	10
65	10	10
66	10	10
67	10	10
68	10	10
69	10	10
70	10	10
71	10	10
72	10	10
73	10	10
74	10	10
75	10	10
76	10	10
77	10	10
78	10	10
79	10	10
80	10	10
81	10	10
82	10	10
83	10	10
84	10	10
85	10	10
86	10	10
87	10	10
88	10	10
89	10	10
90	10	10
91	10	10
92	10	10
93	10	10
94	10	10
95	10	10
96	10	10
97	10	10
98	10	10
99	10	10
100	10	10

N/A
N/A
880

RNAV (GPS)-A

RNP APCH - GPS.



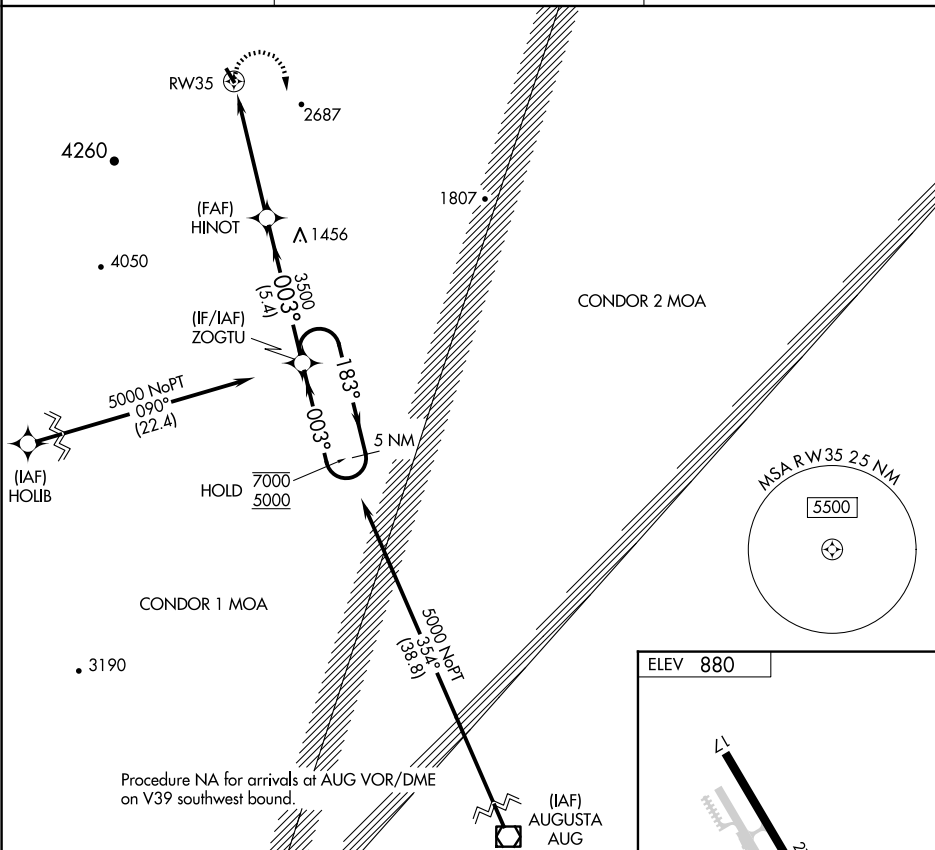
Procedure NA at night. Rwy 17 and 35 helicopter visibility reduction below 1 SM NA. When local altimeter setting not received, use Rangeley altimeter setting.

MISSED APPROACH:
Climbing right turn to 5000
direct ZOGTU and hold.

AWOS-AV
120.0

BOSTON CENTER
120.25 346.4

UNICOM
122.8 (CTAF)



NE-1, 10 JUL 2025 to 07 AUG 2025

5 NM
Holding Pattern

ZOGTU

5000

ZOGTU


$$\frac{183^\circ}{003^\circ}$$

HINOT

00

DVA/3

7

CATEGORY

A

10

--	--

10

NA

CARRABASSETT, MAINE
Amdt 1B 14JUL22

45°05'N-70°13'W

SUGARLOAF RGNL (B21)
RNAV (GPS)-A