

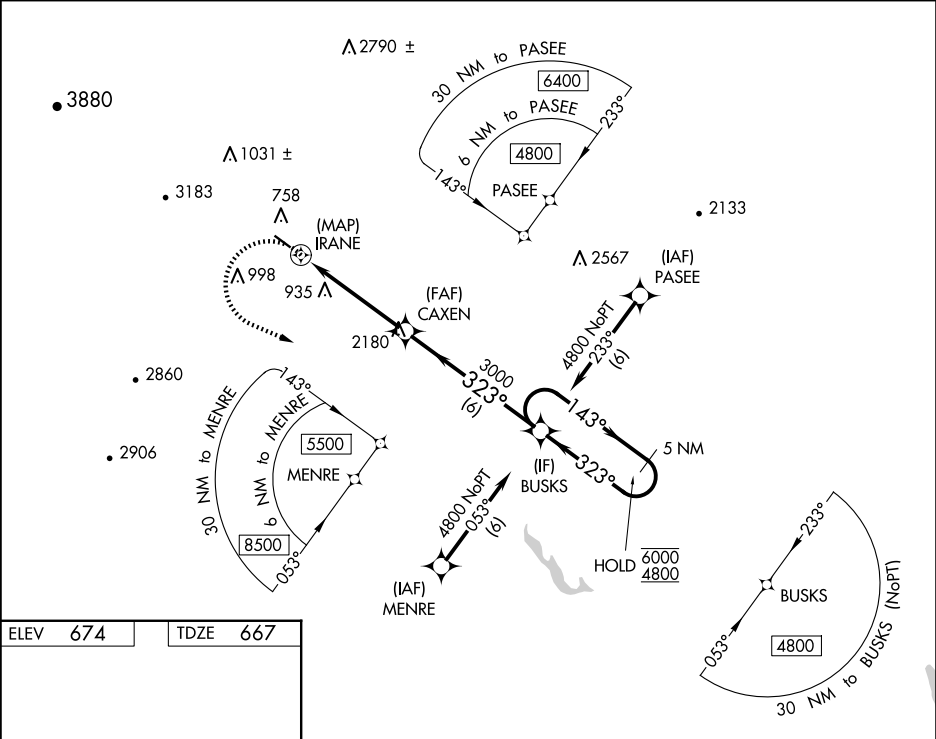
APP CRS	Rwy Ldg	3818
323°	TDZE	667
	Apt Elev	674

RNAV (GPS) Y RWY 32

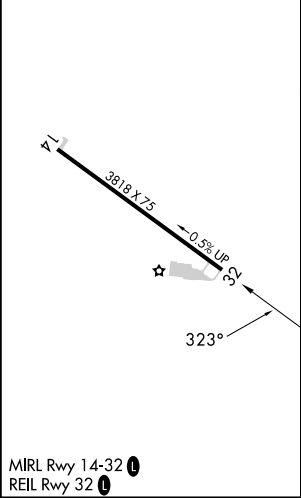
BETHEL RGNL (ØB1)







RNP APCH-GPS.	<p>⚠ Circling Rwy 14 NA at night. Rwy 32 helicopter visibility reduction below ¾ SM NA. When local altimeter setting not received, use Augusta altimeter setting and increase all MDA's 160 feet. Caution any go-around after passing IRANE, may not provide standard obstacle clearance. VDP NA when using Augusta State altimeter setting.</p>	MISSED APPROACH: Climbing left turn to 4800 direct BUSKS and hold, continue climb-in-hold to 4800.
---------------	--	--

AWOS-AV 119.075	PORTLAND APP CON★ 125.5 269.35	CTAF 122.90
--------------------	-----------------------------------	----------------



ELEV 674	TDZE 667
----------	----------



<div>4800</div> <div></div> <div><div>BUSKS</div><div></div></div>		<div>5 NM</div> <div>Holding Pattern</div>		
<div><div>IRANE</div><div>1.8 NM to IRANE</div><div></div></div>		<div>CAXEN</div> <div></div> <div><div>3000</div><div>$\leq 4.20^\circ$</div><div>TCH 50</div></div>	<div>BUSKS</div> <div><div>143° → 6000</div><div>← 323° 4800</div></div> <div>323°</div>	
<div></div> <div>0.5</div> <div>1.8 NM</div> <div>2.8 NM</div> <div>6 NM</div>				
CATEGORY	A	B	C	D
LNAV MDA	1740-1¼ 1073 (1100-1¼)	1740-1½ 1073 (1100-1½)	NA	
 CIRCLING	1740-1¼ 1066 (1100-1¼)	2260-1½ 1586 (1600-1½)	NA	