

WAAS CH 49134 W03A	APP CRS 035°	Rwy Idg 3398 TDZE 941 Apt Elev 943
--	------------------------	---

RNAV (GPS) RWY 3

MIAMI COUNTY (K81)

RNP APCH - GPS.

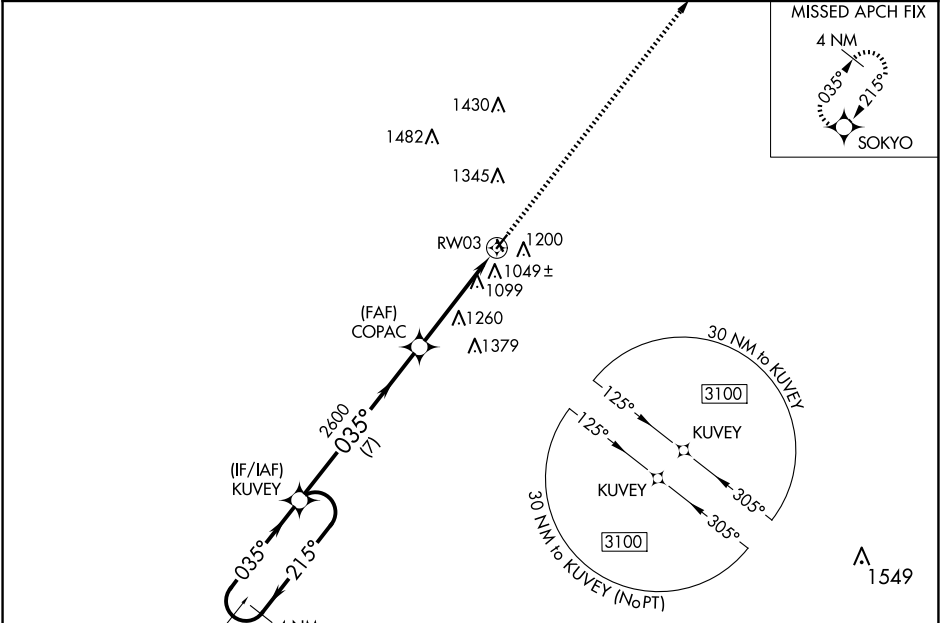
▼

▲ NA

Baro-VNAV NA. Use New Century Aircenter altimeter setting; when not received, use Johnson County Exec altimeter setting and increase all DA 8 feet and all MDA 20 feet. Rwy 3 helicopter visibility reduction below ¾ SM NA. Circling NA to Rwys 15 and 33.

MISSED APPROACH: Climb to 3100 direct SOKYO and hold.

IXD ASOS 135.325	KANSAS CITY APP CON 118.9 251.075	UNICOM 122.8 (CTAF) 0
----------------------------	---	---------------------------------



ELEV 943 TDZE 941

4 NM Holding Pattern

6000
3100

← 215°
035° →

KUYEY

035°

2600

COPAC

2600

RWY03

7 NM

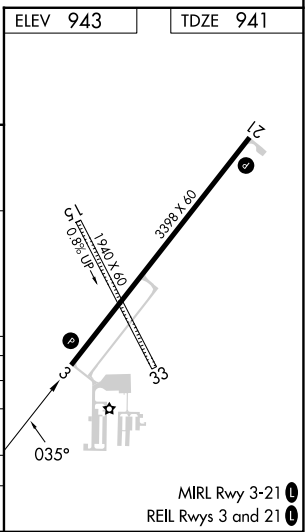
4.5 NM

3100

SOKYO

GP 3.38°
TCH 40

CATEGORY	A	B	C	D
LPV DA	1284-1	343 (400-1)		NA
LNAV/VNAV DA	1274-1	333 (400-1)		NA
LNAV MDA	1640-1	699 (700-1)		NA
C CIRCLING	1640-1	697 (700-1)		NA



NC-2, 10 JUL 2025 to 07 AUG 2025

NC-2, 10 JUL 2025 to 07 AUG 2025