

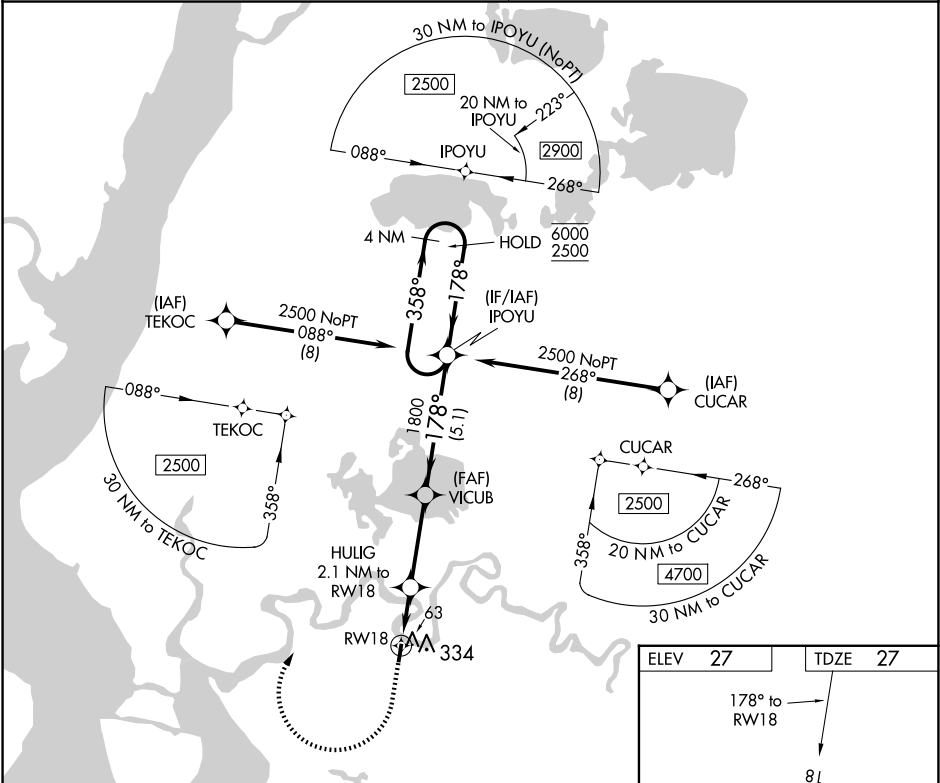
APP CRS	Rwy Idg	3242
178°	TDZE	27
	Apt Elev	27

RNAV (GPS) RWY 18

EEK (EEK) (PAEE)

RNP APCH.	MISSED APPROACH: Climb to 600 then climbing right turn to 2500 direct IPOYU and hold.
NA	Use Bethel altimeter setting, when not received procedure NA.

ANCHORAGE CENTER 125.2 372.0	CTAF 122.8
---------------------------------	---------------



600	2500	IPOYU	VGSI and descent angles not coincident (VGSI Angle 3.00/TCH 24).	4 NM Holding Pattern
↑	↘	✧		
CATEGORY	A	B	C	D
LNAV MDA	420-1	393 (400-1)	NA	
CIRCLING	740-1	713 (800-1)	NA	

