

APP CRS
008°

Rwy Idg
TDZE
Apt Elev

5006
230
237

RNAV (GPS) RWY 1

NORTH PICKENS (3M8)

RNP APCH - GPS.

▼

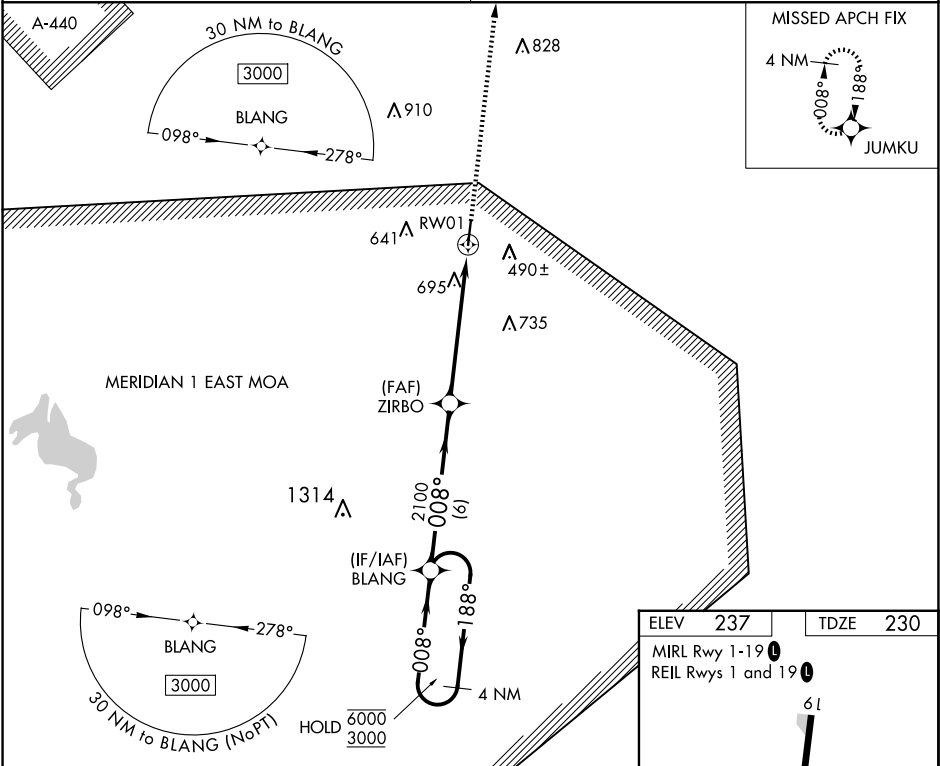
NA

Procedure NA at night. Rwy 1 helicopter visibility reduction below 1 SM NA.
Obtain local altimeter setting on CTAF; when not received, use Tuscaloosa altimeter setting; increase all MDAs 80 feet and LNAV visibility Cat B ¼ SM and Cats C and D ½ SM; increase Circling visibility all Cats ½ SM.

MISSED APPROACH: Climb to 3000 direct JUMKU and hold.

COLUMBUS APP CON ★
135.6 323.275

CTAF
122.9



4 NM Holding Pattern

BLANG

Visual Segment - Obstacles.

3000 JUMKU

6000 ← 188°

3000 → 008°

008°

ZIRBO

2100

RW01

6 NM

5.8 NM

CATEGORY	A	B	C	D
LNAV MDA	960-1	730 (800-1)	960-2	730 (800-2)
CIRCLING	1000-1	763 (800-1)	1000-2¼ 763 (800-2¼)	1040-2½ 803 (900-2½)

ELEV 237

TDZE 230

MIRL Rwy 1-19

REIL Rws 1 and 19

61

5144 X 80

008°