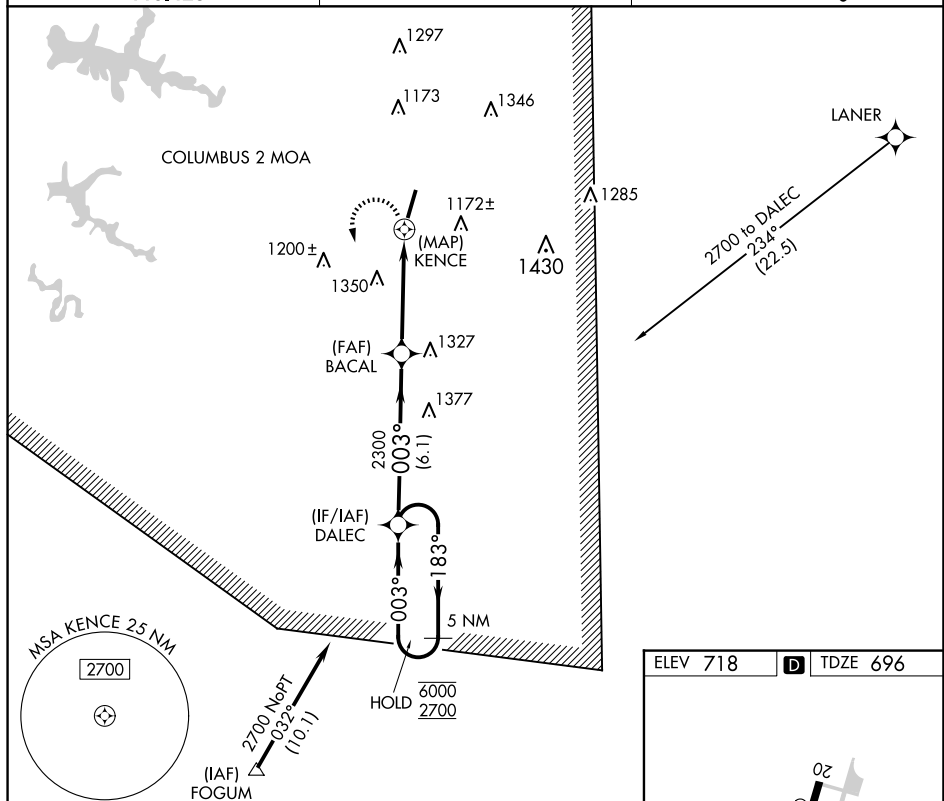


RNAV (GPS) RWY 2
BILL PUGH FLD (M22)

T Procedure NA at night. Rwy 2 helicopter visibility reduction below 1 SM NA. Use Muscle Shoals altimeter setting; when not received, use Decatur altimeter setting and increase all MDA 60 feet.

MISSED APPROACH: Climbing left turn to 2700 direct DALEC and hold.

MEMPHIS CENTER
120.8 307.0

UNICOM
122.8 (CTAF) **L**

5 NM Holding Pattern

DALEC

Visual Segment - Obstacles.

2700 DALEC

6000 ← 183°

2700 003° →

003°

BACAL

2300

KENCE

6.1 NM

4.5 NM

0.4 NM

CATEGORY	A	B	C	D
LNAV MDA	1660-1¼ 964 (1000-1¼)	1660-1½ 964 (1000-1½)	1660-3	964 (1000-3)
CIRCLING	1660-1¼ 942 (1000-1¼)	1660-1½ 942 (1000-1½)	1720-3	1002 (1100-3)

34°27'N-87°43'W

BILL PUGH FLD (M22)
RNAV (GPS) RWY 2

SE-4, 10 JUL 2025 to 07 AUG 2025