

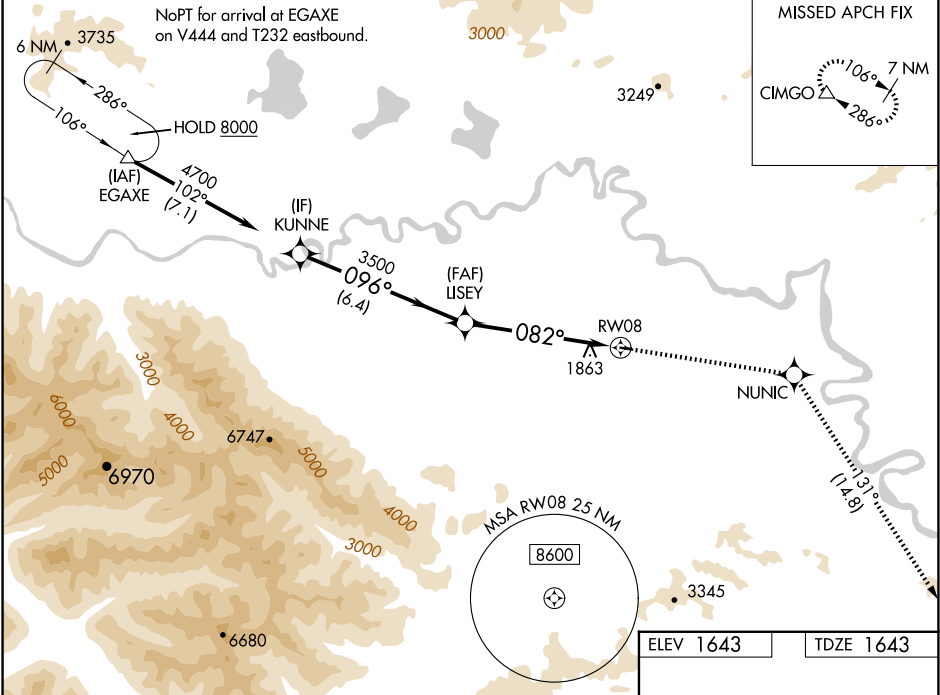
WAAS CH <b>77546</b> <b>W08A</b>	APP CRS <b>082°</b>	Rwy Idg TDZE <b>1643</b> Apt Elev <b>1643</b>
--	------------------------	---

RNAV (GPS) RWY 8

TOK JUNCTION (6K8) (PFTO)

RNP APCH - GPS.	MISSED APPROACH: Climb to 8000 direct NUNIC and on track 131° to CIMGO and hold, continue climb-in-hold to 8000.
<div><div></div><div>Rwy 8 helicopter visibility reduction below ¾ SM NA. For uncompensated Baro-VNAV systems, LNAV/VNAV NA below -25°C or above 54°C.</div></div>	

AWOS-3P <b>118.1</b>	ANCHORAGE CENTER <b>126.55 323.0</b>	NORTHWAY RADIO <b>122.4</b>	UNICOM <b>122.8 (CTAF) 0</b>
-------------------------	---	--------------------------------	---------------------------------



KUNNE		8000	NUNIC	tr 131°	CIMGO
4700		3500			
GP 3.04°		3500	1.4 NM to RW08	RW08	
TCH 40					
6.4 NM		4.3 NM	1.4		
CATEGORY	A	B	C	D	
LPV DA	1895-1 252 (300-1)			NA	
LNAV/VNAV DA	2120-1 477 (500-1 3/8)			NA	
LNAV MDA	2120-1	477 (500-1)	2120-1 477 (500-1 3/8)	NA	
CIRCLING	2180-1	537 (600-1)	2180-1 537 (600-1 1/2)	NA	

ELEV 1643	TDZE 1643
<div>MIRL Rwy 8-26 0</div>	