

APP CRS	Rwy Idg	2660
296°	TDZE	30
	Apt Elev	30

RNAV (GPS) RWY 30  
DEERING (DEE)(PADE)

⚠

DME/DME RNP-0.3 NA.

⚠

Rwy 30 helicopter visibility reduction below 1 SM NA.

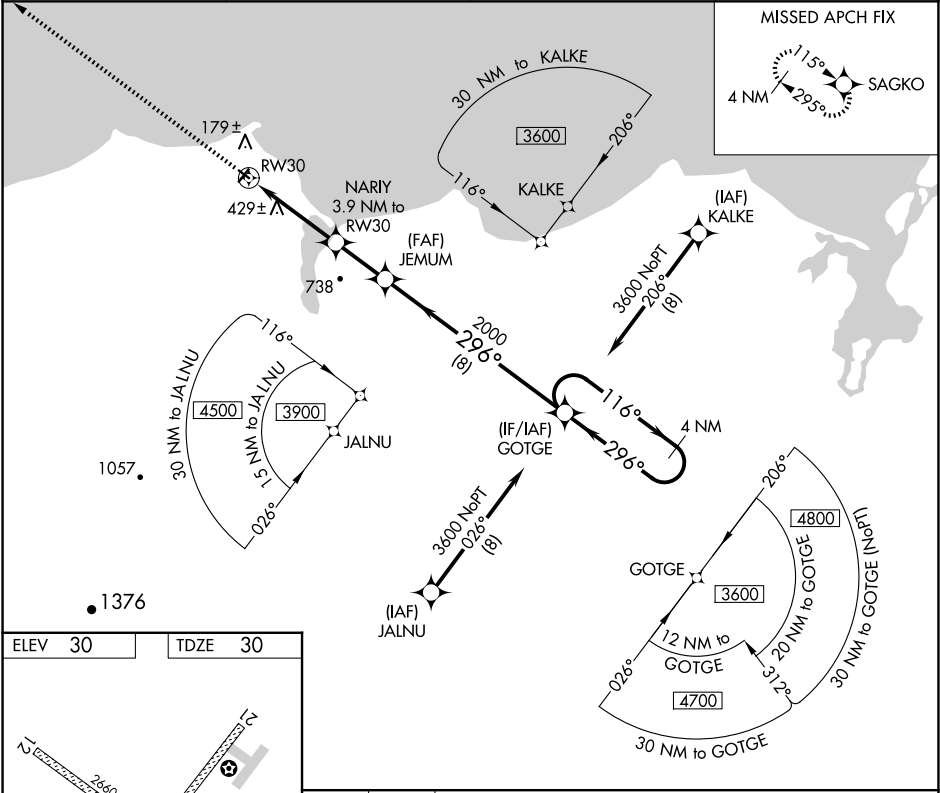
❄

-39°C

Straight-in Rwy 12 NA at night, Circling Rwy 12, 30 NA at night.

MISSED APPROACH: Climb to 3000 direct SAGKO and hold.

ASOS 135.5	ANCHORAGE CENTER 119.2 263.0	KOTZEBUE RADIO 122.25	CTAF 122.9
---------------	---------------------------------	--------------------------	---------------



ELEV 30

TDZE 30

Inset chart showing RWY 30 and RWY 12 intersection. RWY 30 is 2660 ft x 75 ft, heading 296°. RWY 12 is 3020 ft x 75 ft, heading 116°. Altitudes: 2660 ft, 3020 ft, 296° heading.

REIL Rwy 3 0  
MIRL Rwy 3-21 and 12-30 0

Visual Segment - Obstacles.			
3000	SAGKO	GOTGE	4 NM Holding Pattern
JEMUM			
NARIY 3.9 NM to RWY 30			
RWY 30			
1300 2000			
3.9 NM 2.2 NM 8 NM			
CATEGORY	A	B	C
INAV MDA	740-1	710 (800-1)	740-2
			710 (800-2)
			NA
CIRCLING	740-1	840-1	840-2 1/4
	710 (800-1)	810 (900-1)	810 (900-2 1/4)
			NA

AK, 12 JUN 2025 to 07 AUG 2025

AK, 12 JUN 2025 to 07 AUG 2025