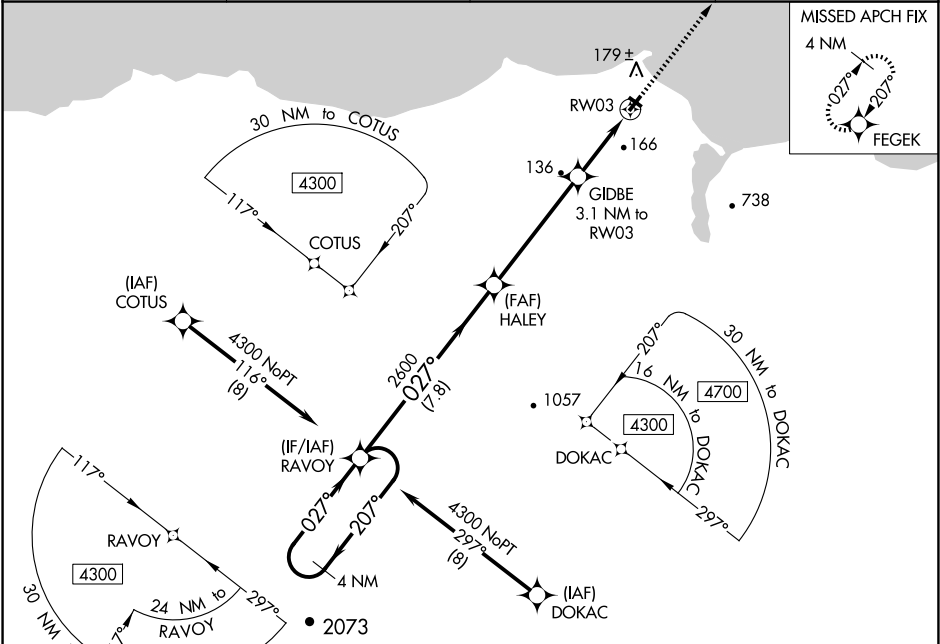


WAAS CH 97341 W03A	APP CRS 027°	Rwy Idg TDZE 25 Apt Elev 30
--	------------------------	---

RNAV (GPS) RWY 3
DEERING (DEE)(PADE)

<div><div><div></div><div></div></div><div><div></div><div></div></div></div> <div><div><div></div><div></div></div><div><div></div><div></div></div></div>	Circling to Rwy 12, 30 NA at night. For uncompensated Baro-VNAV systems, LNAV/VNAV NA below -19°C (-2°F) or above 54°C (130°F). DME/DME RNP-0.3 NA.	MISSED APPROACH: Climb to 3700 direct FEGEK and hold, continue climb-in-hold to 3700.
---	---	---

ASOS 135.5	ANCHORAGE CENTER 119.2 263.0	KOTZEBUE RADIO 122.25	CTAF 122.9 0
----------------------	--	---------------------------------	------------------------



ELEV 30		TDZE 25		
4 NM Holding Pattern		VGSI and RNAV glidepath not coincident (VGSI Angle 3.00/TCH 25).		
4300 ← 207° 027° →		3700 FEGEK * LNAV only		
GP 3.00° TCH 45		* 1040		
7.8 NM		4.9 NM		
1.9 NM		1.2 NM		
CATEGORY	A	B	C	D
LPV DA	275-1	250 (300-1)		NA
LNAV/ VNAV DA	275-1	250 (300-1)		NA
LNAV MDA	420-1	395 (400-1)	420-1 1/8 395 (400-1 1/8)	NA
CIRCLING	680-1 650 (700-1)	840-1 810 (900-1)	840-2 1/4 810 (900-2 1/4)	NA

REIL Rwy 3
MIRL Rws 3-21 and 12-30