

APP CRS  
**083°**

Rwy Idg  
**3299**

TDZE  
**964**

Apt Elev  
**967**

**RNAV (GPS) RWY 8**

BOYCEVILLE MUNI (3T3)

RNP APCH.

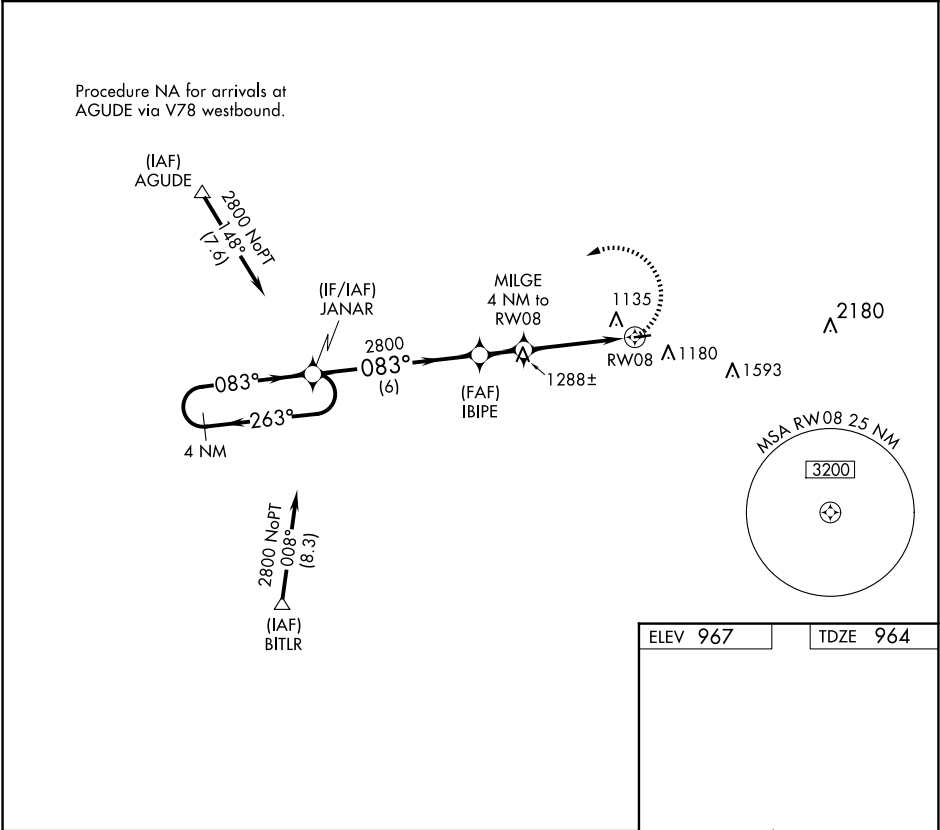
▼

▲ NA

Use New Richmond Rgnl altimeter setting.  
When VGSI inop, procedure NA at night.  
Helicopter visibility reduction below 1 SM NA.

MISSED APPROACH: Climbing left turn to 2800 direct JANAR and hold.

RNH AWOS-3 <b>120.0</b>	MINNEAPOLIS CENTER <b>125.3 335.6</b>	UNICOM <b>122.8 (CTAF) 0</b>
----------------------------	--	---------------------------------



4 NM Holding Pattern

2800 ← 263°  
083° → 2800

JANAR

IBIPE

MILGE 4 NM to RW08

2280

RW08

6 NM

1.6 NM

4 NM

2800

JANAR

083°

3299 X 60

0.5% UP

26

VGSI and descent angles not coincident (VGSI Angle 4.00/TCH 34).

2800

JANAR

CATEGORY	A	B	C	D
LNAV MDA	1580-1	616 (700-1)	1580-1¾ 616 (700-1¾)	NA

MIRL Rwy 8-26 0

REIL Rwy 26 0