

APP CRS <b>340°</b>	Rwy Idg TDZE Apt Elev	<b>N/A</b> <b>N/A</b> <b>723</b>
------------------------	-----------------------------	--

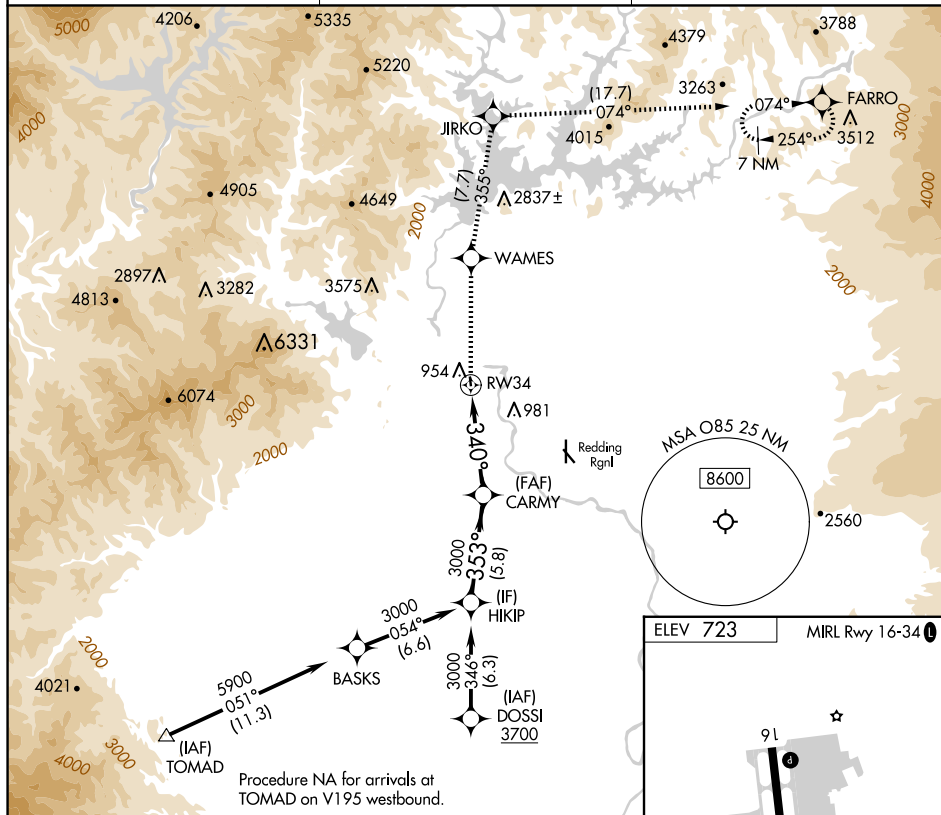
RNAV (GPS)-B  
BENTON FLD (085)

RNP APCH - GPS.

**NA** Procedure NA at night. Rwy 16, 34 helicopter visibility reduction below 1 SM NA. When local altimeter setting not received, use Redding RanI altimeter setting and increase all MDAs 60 feet.

**MISSED APPROACH:** Climb to 10000 direct WAMES and on track 355° to JIRKO and on track 074° to FARRO and hold, continue climb-in-hold to 10000

AWOS-2 <b>118.675</b>	OAKLAND CENTER <b>132.2 350.3</b>	UNICOM <b>122.8 (CTAF) 0</b>
--------------------------	--------------------------------------	---------------------------------



10000 WAMES tr 355° JIRKO tr 074° FARRO CARMY HIKIP

VGSI and descent angles not coincident (VGSI Angle 3.50/TCH 24).

RW34 340° 353° 3000

3.50° TCH 60

6 NM 5.8 NM

CATEGORY	A	B	C	D
<b>C</b> CIRCLING	1900-1¼ 1177 (1200-1¼)	1900-1½ 1177 (1200-1½)	NA	

2420 X 75 34 340°

