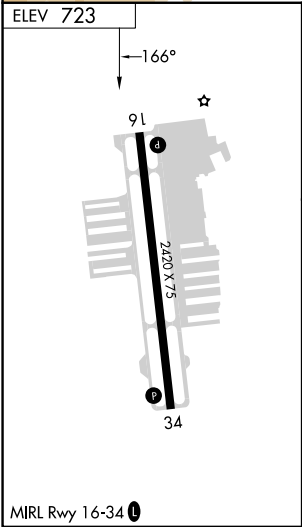
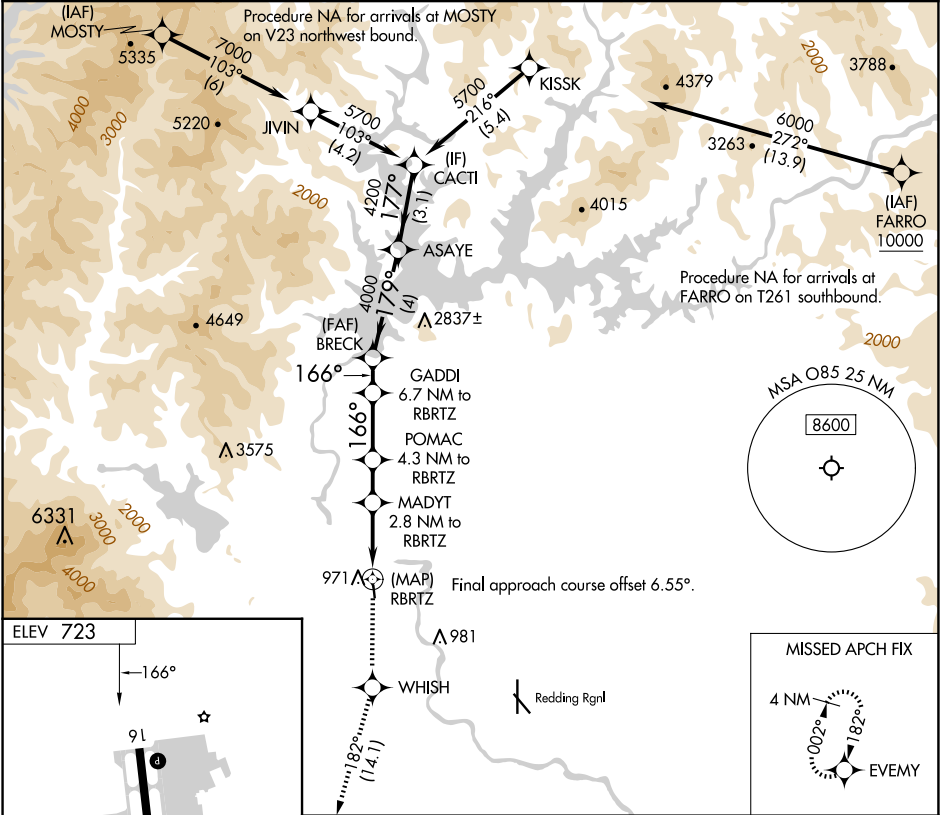


APP CRS	Rwy Idg	N/A
166°	TDZE	N/A
	Apt Elev	723

RNAV (GPS)-A  
BENTON FLD (O85)

RNP APCH - GPS.		MISSED APPROACH: Climb to 4000 direct WHISH and on track 182° to EVMY and hold.
Procedure NA at night. Rwy 16, 34 helicopter visibility reduction below 1 SM NA. When local altimeter setting not received, use Redding Rgnl altimeter setting and increase all MDAs 60 feet.		

AWOS-2 118.675	OAKLAND CENTER 132.2 350.3	UNICOM 122.8 (CTAF) 0
-------------------	-------------------------------	--------------------------



4000	WHISH	tr 182°	EVMY	VGSI and descent angles not coincident (VGSI Angle 3.50/TCH 24).	CACTI
				GADDI 6.7 NM to RBRTZ	BRECK
				POMAC 4.3 NM to RBRTZ	ASAYE
				MADYT 2.8 NM to RBRTZ	4200
				166°	177°
				1960	2560
				3500	4000
				2.8 NM	1.5 NM
				2.4 NM	1.3 NM
				4 NM	3.1 NM
CATEGORY	A	B	C	D	
CIRCLING	1340-1 617 (700-1)	1600-1¼ 877 (900-1¼)			NA

SW-2, 10 JUL 2025 to 07 AUG 2025

SW-2, 10 JUL 2025 to 07 AUG 2025