


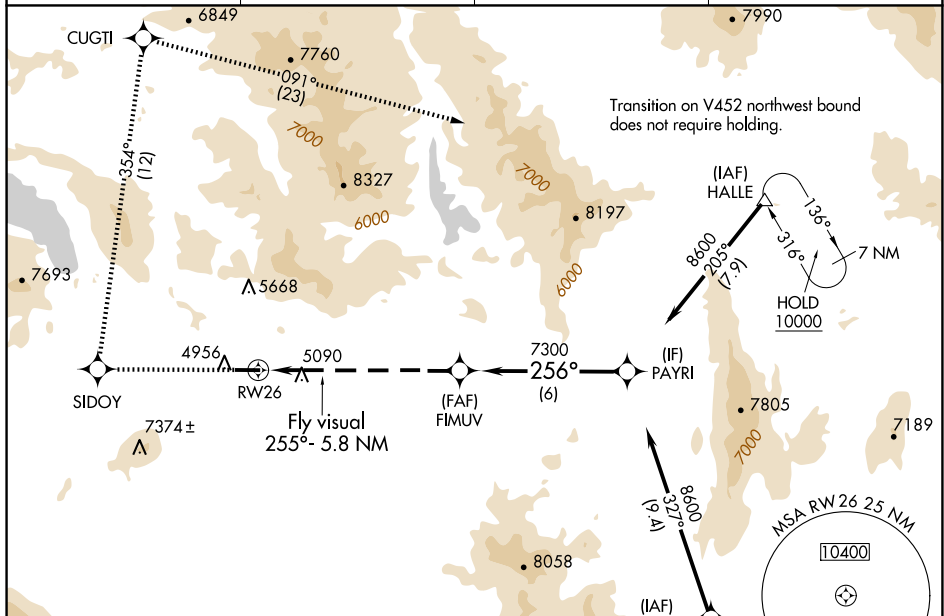


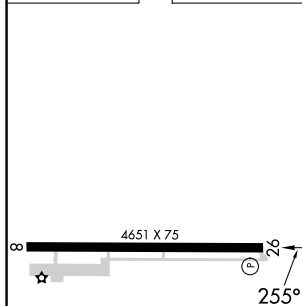
WAAS CH <b>49203</b> <b>W26A</b>	APP CRS <b>256°</b>	Rwy Idg <b>4651</b> TDZE <b>4896</b> Apt Elev <b>4900</b>
--	------------------------	---

RNAV (GPS) Z RWY 26  
NERVINO (002)

  NA  -13°C	Use Reno/Stead altimeter setting; when not received, use Reno/Tahoe Int'l altimeter setting and increase DA 180 feet. DME/DME RNP -0.3 NA. Helicopter visibility reduction below ¾ SM not authorized.		MISSED APPROACH: Climb to 10000 direct SIDOY and right turn on track 354° to CUGTI and right turn on track 091° to HALLE and hold.	
AWOS-2 <b>119.35</b>	RTS AWOS-3 <b>135.175</b>	NORCAL APP CON <b>126.3 353.9</b>		UNICOM <b>122.8 (CTAF) 0</b>



ELEV 4900		TDZE 4896
-----------	--	-----------



10000		SIDOY		CUGTI		HALLE		VGS1 and RNAV glidepath not coincident (VGS1 Angle 3.50/TCH 50).	
								PAYRI	
		Fly visual 255°- 5.8 NM		FIMUV 7300		256°		8600	
		RW26				7300		GP 3.00° TCH 55	
		7.2 NM		6 NM					
CATEGORY		A		B		C		D	
LPV DA		6787-2 1891 (1900-2)				6787-3 1891 (1900-3)			

## RNAV (GPS) Z RWY 26