

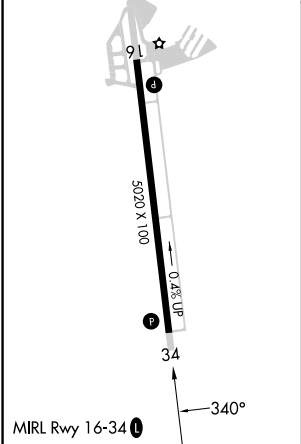
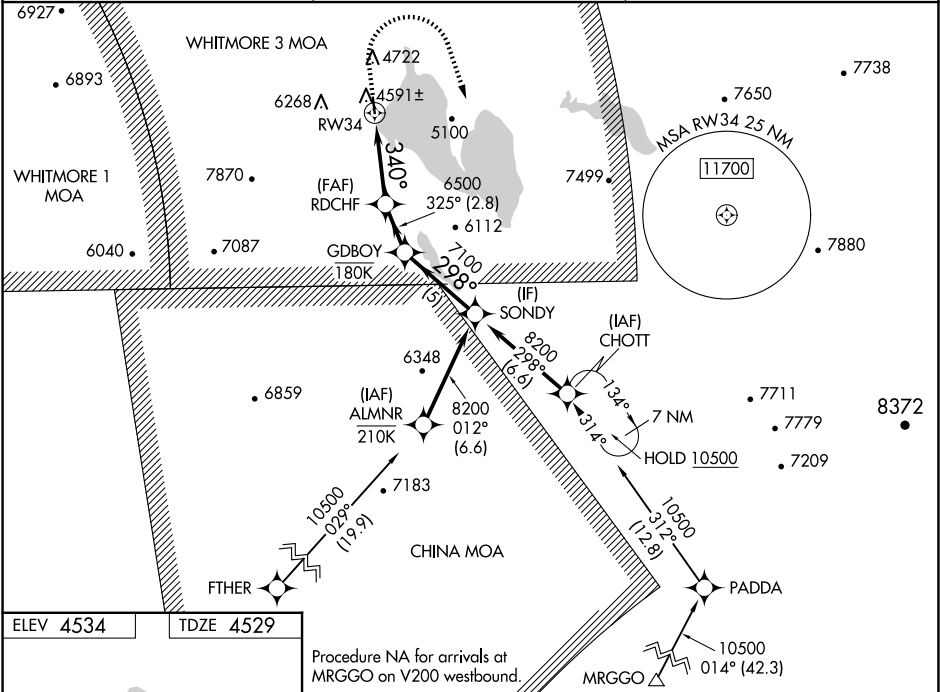
WAAS CH 68560 W34B	APP CRS 340°	Rwy Idg TDZE Apt Elev	5020 4529 4534
--	------------------------	-----------------------------	---

RNAV (GPS) RWY 34

ROGERS FLD (005)

RNP APCH - GPS.	MISSED APPROACH: (Do not exceed 165K until initial turn completion) Climb to 5200 then climbing right turn to 10500 direct CHOTT and hold, continue climb-in-hold to 10500. *Missed approach requires a minimum climb of 377 feet per NM to 7680 feet.
-----------------	---

AWOS-3 118.275	OAKLAND CENTER 132.2 350.3	UNICOM 122.8 (CTAF) 0
--------------------------	--------------------------------------	--



5200	10500	CHOTT	VGSI and RNAV glidepath not coincident (VGSI Angle 3.00/TCH 32)		SONDY
↑	↗	✧	1.9 NM to RW34	RDCHF	GDBOY
			340°	6500	7100
			325°	6500	8200
			298°		
			1.9 NM	3 NM	2.8 NM
			5 NM		
					GP 3.68° TCH 46
CATEGORY	A	B	C	D	
LPV DA*	4779-3/4	250 (300-3/4)	4829-7/8 300 (300-7/8)	NA	
RNAV MDA*	5160-1	631 (700-1)	5160-1 3/4 631 (700-1 3/4)	NA	
RNAV MDA	5360-1 831 (900-1)	5360-1 1/4 831 (900-1 1/4)	5360-2 1/2 831 (900-2 1/2)	NA	
CIRCLING	5440-1 1/4 906 (1000-1 1/4)	5660-1 1/2 1126 (1200-1 1/2)	5660-3 1126 (1300-3)	NA	

SW-2, 10 JUL 2025 to 07 AUG 2025

SW-2, 10 JUL 2025 to 07 AUG 2025