

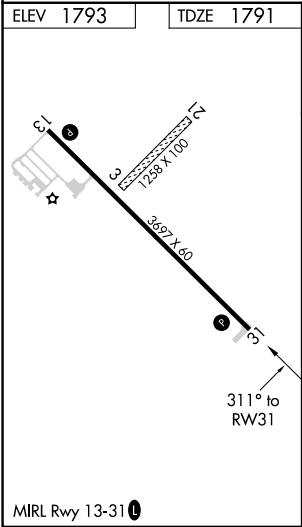
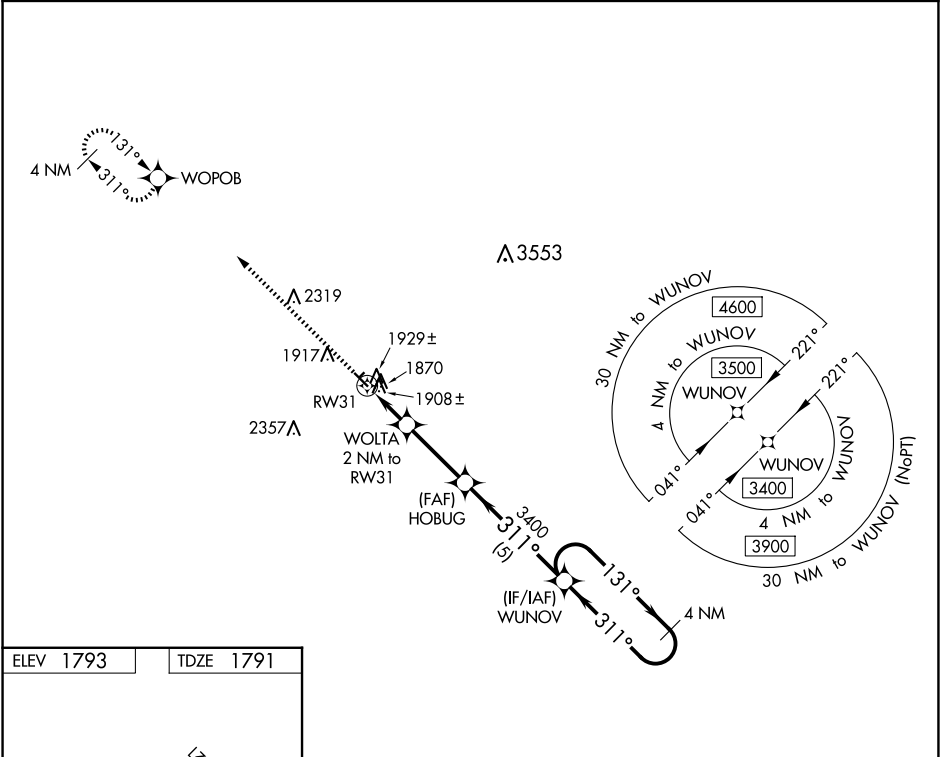
WAAS CH <b>63240</b> <b>W31A</b>	APP CRS <b>311°</b>	Rwy Idg TDZE <b>1791</b> Apt Elev <b>1793</b>
--	------------------------	---



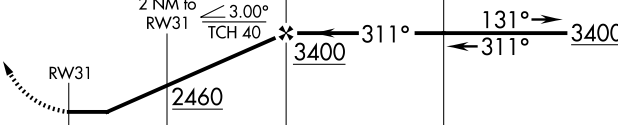

RNAV (GPS) RWY 31

CLARK COUNTY (8D7)

<div><div><div>▼</div><div>NA</div></div><div>Rwy 31 helicopter visibility reduction below ¾ SM NA. DME/DME RNP-0.3 NA. Use Watertown altimeter setting. Circling Rwys 3, 21 NA.</div></div> <div>MISSED APPROACH: Climb to 3400 direct WPOB and hold.</div>
--

ATY ASOS <b>126.625</b>	MINNEAPOLIS CENTER <b>128.5 306.2</b>	UNICOM <b>122.8 (CTAF) 0</b>
----------------------------	--	---------------------------------



3400	WOBOB				HOBUG	WUNOV	4 NM Holding Pattern
							
							
CATEGORY		A	B	C	D		
LP	MDA	2220-1	429 (500-1)	NA			
LNAV	MDA	2240-1	449 (500-1)	NA			
 CIRCLING		2340-1 547 (600-1)	2380-1 587 (600-1)	NA			