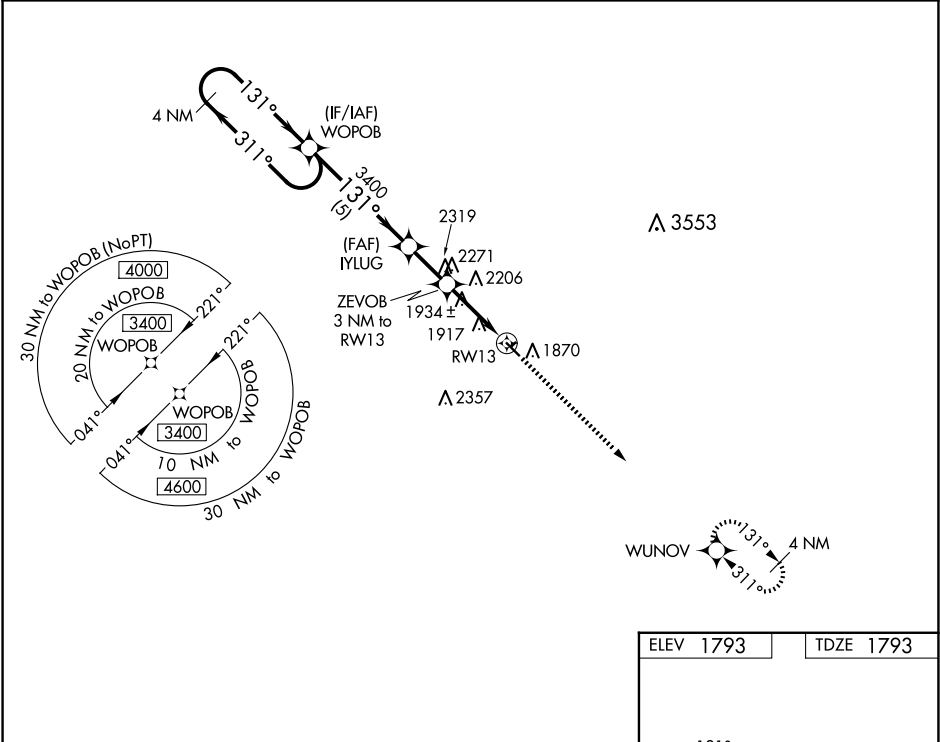


WAAS CH <b>58340</b> <b>W13A</b>	APP CRS <b>131°</b>	Rwy Idg TDZE <b>1793</b> Apt Elev <b>1793</b>
--	------------------------	---

RNAV (GPS) RWY 13

CLARK COUNTY (8D7)

RNP APCH.		MISSED APPROACH: Climb to 3400 direct WUNOV and hold.
<div>▼</div> <div>▲ NA</div>	Rwy 13 helicopter visibility reduction below ¾ SM NA. Use Watertown altimeter setting. Circling NA to Rwys 3 and 21.	
ATY ASOS 126.625	MINNEAPOLIS CENTER 128.5 306.2	UNICOM 122.8 (CTAF) 0



VGSI and descent angles not coincident (VGSI Angle 3.00/TCH 31).					ELEV 1793	TDZE 1793
4 NM Holding Pattern					3400	WUNOV
3400 ← 311° → 131° → 3400					3400	WUNOV
5 NM					1.9 NM	3 NM
CATEGORY	A	B	C	D		
LP MDA	2260-1	467 (500-1)	NA			
LNAV MDA	2400-1	607 (700-1)	NA			
CIRCLING	2400-1	607 (700-1)	NA			