

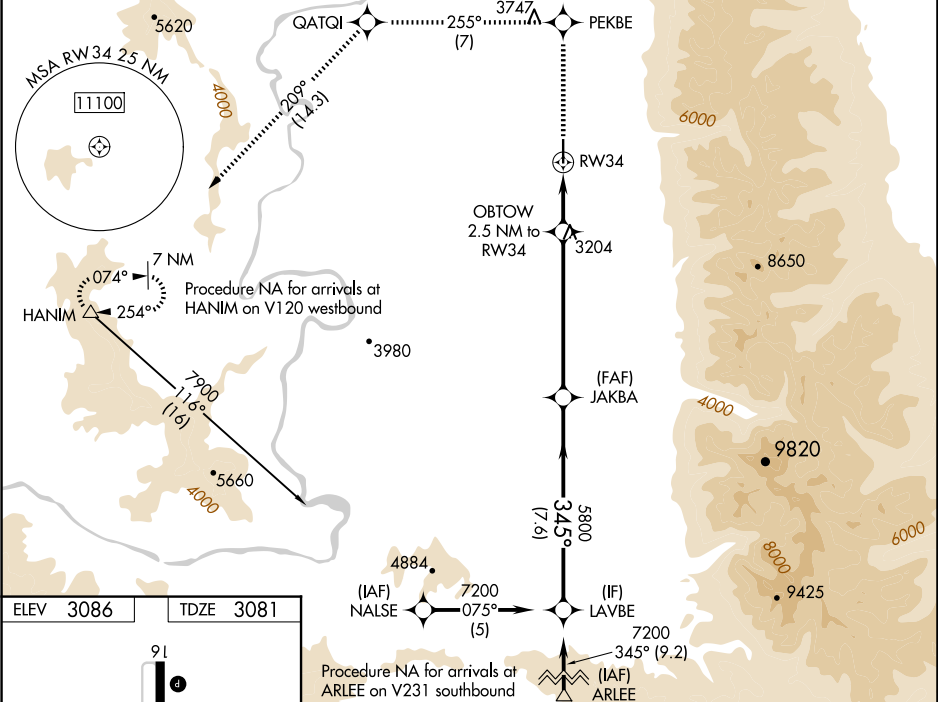
WAAS CH 86614 W34A	APP CRS 345°	Rwy Idg 4798 TDZE 3081 Apt Elev 3086
--	------------------------	---

RNAV (GPS) RWY 34

RONAN (7SØ)

RNP APCH.		MISSED APPROACH: Climb to 13000 direct PEKBE and on track 255° to QATQI and on track 209° to HANIM and hold, continue climb-in-hold to 13000.
NA Baro-VNAV NA when using Missoula altimeter setting. For uncompensated Baro-VNAV systems, procedure NA below -21°C or above 54°C. Circling NA east of Rwy 16-34. When local altimeter setting not received, use Missoula altimeter setting and increase LPV DA to 3545 and all visibilities ¾ SM, LNAV/VNAV DA to 3545 and all visibilities ¾ SM; and increase all MDAs 120 feet.		

AWOS-3 119.925	SALT LAKE CITY CENTER 127.075 244.875	AUNICOM 122.8 (CTAF)
--------------------------	---	--------------------------------



ELEV 3086	TDZE 3081	13000 PEKBE tr 255° QATQI tr 209° HANIM VGSi and RNAV glidepath not coincident (VGSi Angle 3.00/TCH 22). LAVBE			
*LNAV only		OBTOW 2.5 NM to RWY 34	5800	7200	GP 3.00° TCH 40
RWY 34		2.5 NM	5.9 NM	7.6 NM	
CATEGORY	A	B	C	D	
LPV DA	3438-1	357 (400-1)	NA		
LNAV/VNAV DA	3438-1¼	357 (400-1¼)	NA		
LNAV MDA	3520-1	439 (500-1)	NA		
CIRCLING	3560-1	474 (500-1)	NA		