

WAAS CH <b>99641</b> <b>W34A</b>	APP CRS <b>335°</b>	Rwy Idg <b>3300</b> TDZE <b>386</b> Apt Elev <b>386</b>
--	------------------------	---

RNAV (GPS) RWY 34

REEDLEY MUNI (O32)

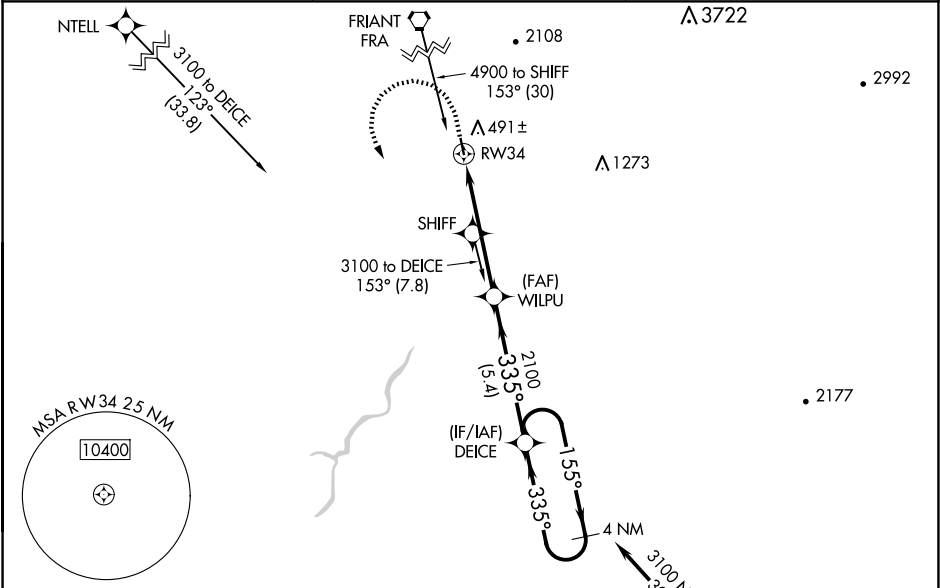
⚠

⚠ NA

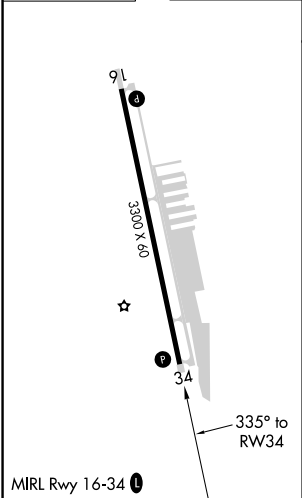
For uncompensated Baro-VNAV systems, LNAV/VNAV NA below -15°C (5°F) or above 54°C (130°F). Circling NA east of Rwy 16-34. Baro-VNAV and VDP NA when using Fresno Yosemite Intl altimeter setting. Rwy 34 helicopter visibility reduction below ¾ SM NA. DME/DME RNP-0.3 NA. When local altimeter setting not received, use Fresno Yosemite Intl altimeter setting: increase all DAs 41 feet and all visibilities ⅓ SM; increase all MDAs 60 feet.

MISSED APPROACH: Climb to 860 then climbing left turn to 3100 direct DEICE and hold, continue climb-in-hold to 3100.

AWOS-3PT <b>120.175</b>	FRESNO APP CON <b>132.35 323.25</b>	UNICOM <b>122.7 (CTAF)</b>
----------------------------	--	-------------------------------



ELEV <b>386</b>	TDZE <b>386</b>
-----------------	-----------------



860	3100	DEICE	VGSI and RNAV glidepath not coincident (VGSI Angle 4.00/TCH 49).			
↑	↶	✧	WILPU	DEICE	4 NM Holding Pattern	
* LNAV only	* 1 NM to RW34		2100	2100	3100	GP 3.00° TCH 49
	1 NM	4.2 NM	5.4 NM			
CATEGORY	A	B	C	D		
LPV DA	636-¾	250 (300-¾)		NA		
LNAV/VNAV DA	740-1	354 (400-1)		NA		
LNAV MDA	860-1	474 (500-1)		NA		
CIRCLING	860-1	474 (500-1)		NA		