

WAAS CH <b>56540</b> <b>W28A</b>	APP CRS <b>283°</b>	Rwy Ldg <b>6000</b> TDZE <b>4230</b> Apt Elev <b>4230</b>
--	------------------------	---

## RNAV (GPS) RWY 28

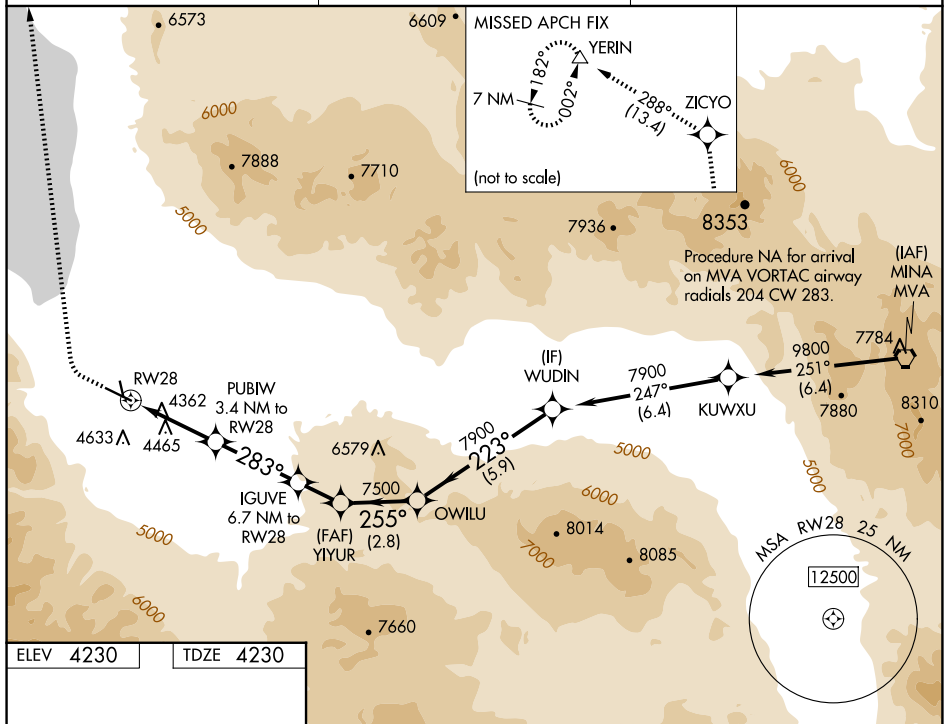
HAWTHORNE INDUSTRIAL (HTH)

**T** Circling NA to Rwy 15 and 33. When local altimeter setting not received, procedure NA. Circling NA south of Rwy 10-28.

**A** DME/DME RNP-0.3 NA. Rwy 28 helicopter visibility reduction below  $\frac{3}{4}$  SM NA.

**MISSED APPROACH:** Climb to 4750 then climbing right turn to 10000 direct ZICYO and on track 288° to YERIN and hold.

AWOS-3 <b>120.225</b>	OAKLAND CENTER <b>125.75 284.65</b>	UNICOM <b>122.8 (CTAF) 0</b>
--------------------------	--	---------------------------------

[illegible]