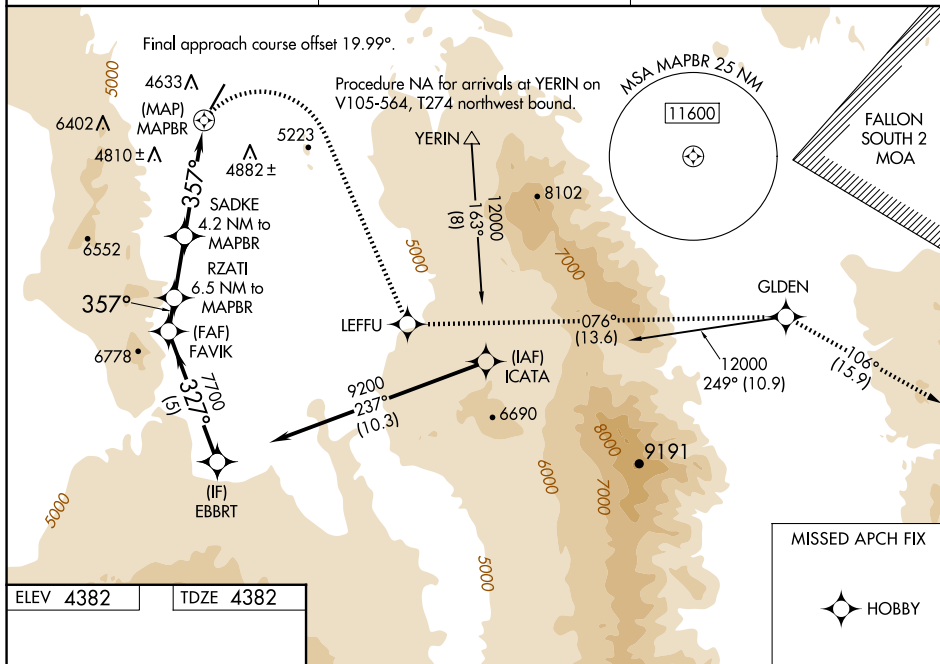


RNAV (GPS) RWY 2
YERINGTON MUNI (043)

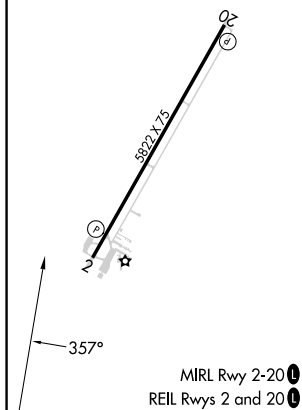
T Procedure NA at night. Rwy 2 helicopter visibility reduction
A NA below 1 SM NA. Circling NA west of Rwy 2-20. Use SPZ
altimeter setting, when not received, use RNO altimeter setting
and increase all MDAs 40 feet and LNAV* visibility Cat C
1/2 SM.

MISSED APPROACH: (Do not exceed 210K until LEFFU) Climbing right turn to 11500 direct LEFFU and on track 076° to GLDEN and on track 106° to HOBBY.
*Missed approach requires minimum climb of 276 feet per NM to 9300.

AUNICOM
122.8 (CTAF) **L**



TDZE 4382



EBBRT

FAVIK

9200

327°

3.77° TCH 40

6.5 NM to MAPBR

7700

357°

7200

1.2 NM

2.3 NM

6300

4.2 NM to MAPBR

VGSJ and descent angles not coincident (VGSJ Angle 3.00/TCH 40).

MAPBR

0.5 NM

CATEGORY	A	B	C	D
RNAV MDA*	5040-1	658 (700-1)	5040-1 $\frac{7}{8}$ 658 (700-1 $\frac{7}{8}$)	NA
RNAV MDA	6200-1 $\frac{1}{4}$ 1818 (1900-1 $\frac{1}{4}$)	6200-1 $\frac{1}{2}$ 1818 (1900-1 $\frac{1}{2}$)	6200-3 1818 (1900-3)	NA
CIRCLING	6200-1 $\frac{1}{4}$ 1818 (1900-1 $\frac{1}{4}$)	6200-1 $\frac{1}{2}$ 1818 (1900-1 $\frac{1}{2}$)	6200-3 1818 (1900-3)	NA

SW-4, 10 JUL 2025 to 07 AUG 2025