

APP CRS  
325°

Rwy Ldg	<b>4250</b>
TDZE	<b>3560</b>
Apt Elev	<b>3560</b>

# RNAV (GPS) RWY 32

## COTTONWOOD (P52)



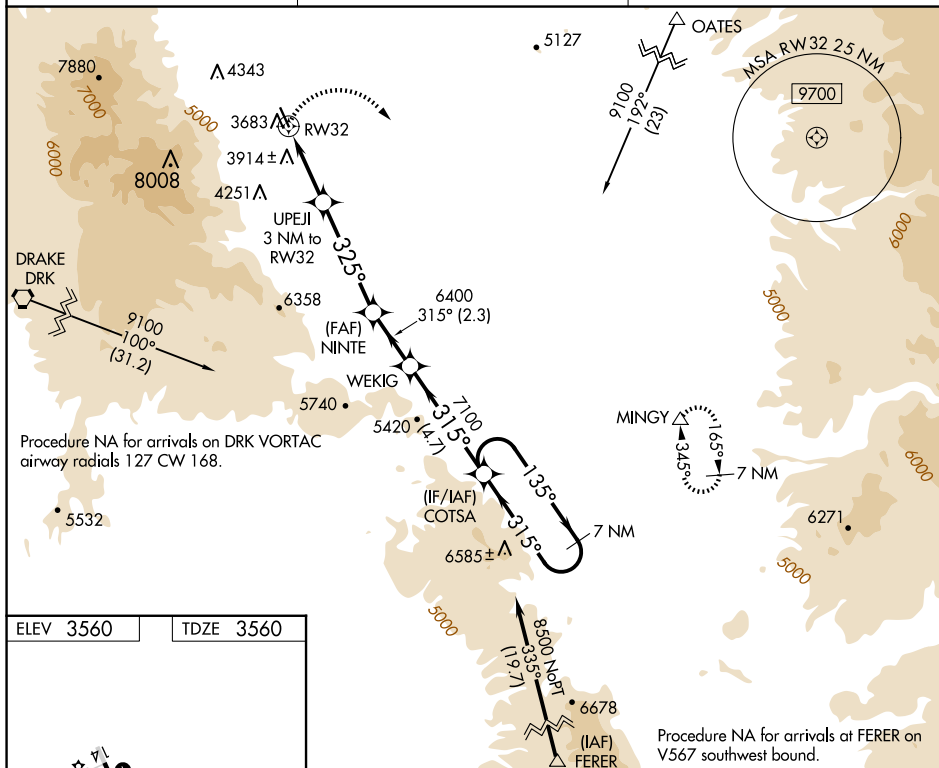
**A NA**

Circling NA southwest of Rwy 14-32. DME/DME RNP-0.3 NA. Procedure NA at night. Helicopter visibility reduction below 1 SM NA. When local altimeter setting not received, use Sedona altimeter setting and increase all MDA 200 feet, increase LNAV and Circling Cat A/B visibility  $\frac{1}{4}$  mile, LNAV Cat C visibility  $\frac{1}{2}$  mile, Circling Cat C visibility  $\frac{3}{4}$  mile.

**MISSED APPROACH:** Climbing right turn to 10000 direct MINGY and hold, continue climb-in-hold to 10000.

AWOS-3  
**119.925**

PHOENIX APP CON  
126.375 236.775

UNICOM  
122.7 (CTAF) **L**

ELEV 3560

TDZE 3560

