

OWYHEE, NEVADA

AL-9858 (FAA)

23110

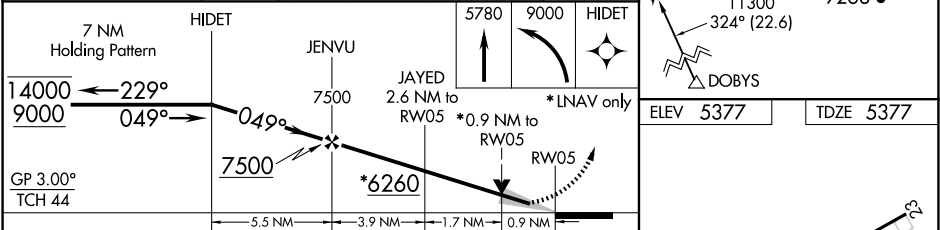
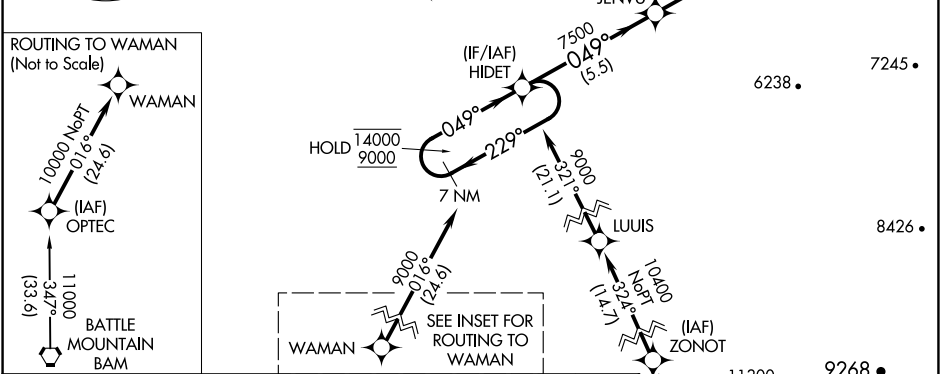
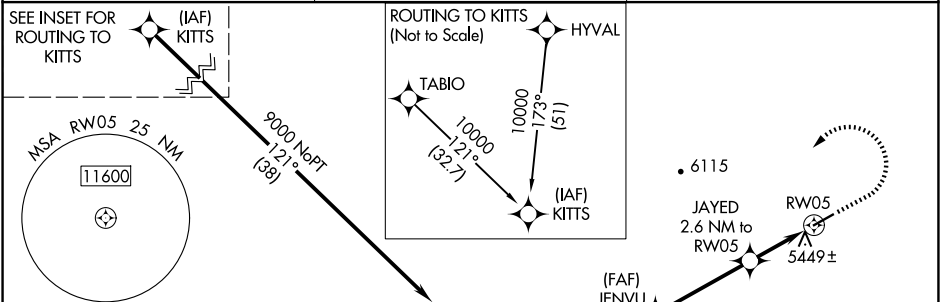
WAAS CH 56643 W05A	APP CRS 049°	Rwy Idg TDZE Apt Elev	4700 5377 5377
--	------------------------	-----------------------------	---

RNAV (GPS) RWY 5

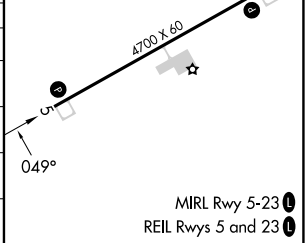
OWYHEE (10U)

RNP APCH.	MISSED APPROACH: Climb to 5780 then climbing left turn to 9000 direct HIDET and hold, continue climb-in-hold to 9000. # Missed approach requires minimum climb of 250 feet per NM to 6500.
⚠ Circling Cats C/D NA southeast of Rwy 5-23. ⚠ For uncompensated Baro-VNAV systems, LNAV/VNAV NA below -25°C or above 54°C.	

AWOS-3PT 118.525	SALT LAKE CENTER 118.05 363.0	CTAF 122.90
----------------------------	---	-----------------------



CATEGORY	A	B	C	D
LPV DA	5577-1 200 (200-1)			
LNAV/VNAV DA#	5627-1 250 (300-1)			
LNAV/VNAV DA	5627-1 250 (300-1)	5909-1½ 532 (600-1½)	5922-1½ 545 (600-1½)	
LNAV MDA	5700-1 323 (400-1)	5840-1½ 463 (500-1½)	5960-1¾ 583 (600-1¾)	
CIRCLING	5760-1 383 (400-1)	5840-1 463 (500-1)	5840-1½ 463 (500-1½)	6860-3 1483 (1500-3)



OWYHEE, NEVADA
Orig 17JUN21

41°57'N-116°11'W

OWYHEE (10U)
RNAV (GPS) RWY 5

SW-4, 10 JUL 2025 to 07 AUG 2025

SW-4, 10 JUL 2025 to 07 AUG 2025