

EUREKA, NEVADA

AL-9852 (FAA)

25163

WAAS CH <b>42732</b> <b>W18A</b>	APP CRS <b>178°</b>	Rwy Ldg <b>7300</b> TDZE <b>5944</b> Apt Elev <b>5958</b>
--	------------------------	---

RNAV (GPS) RWY 18  
EUREKA (Ø5U)

RNP APCH - GPS.

**T** Circling NA for Cat D west of Rwy  
**A** 18-36. When local altimeter setting  
**❄** -17°C not received, procedure NA.

MISSED APPROACH: Climb to 7800 then climbing right turn to 14000 direct  
LECED and on track 138° to RPYO and track 048° to INGOL and hold.  
#Missed approach requires minimum climb of 390 feet per NM to 10200.  
\*Missed approach requires minimum climb of 390 feet per NM to 9900.

AWOS-3 <b>128.325</b>	SALT LAKE CENTER <b>132.25 338.35</b>	CTAF <b>122.90</b>
--------------------------	--	-----------------------

ROUTING TO KAPSS  
(not to scale)

Diagram illustrating the routing path to KAPSS (not to scale). The path starts at KAPSS (bottom left) and branches into two paths leading to SIKEE (top right).

- Path 1: KAPSS → AJAFO → SIKEE
  - KAPSS to AJAFO: 10800, 211° (111.7)
  - AJAFO to SIKEE: 13100, 211° (11.7)
- Path 2: KAPSS → TBROS → SIKEE
  - KAPSS to TBROS: 10800, 239° (8)
  - TBROS to SIKEE: 13100, 239° (14.2)

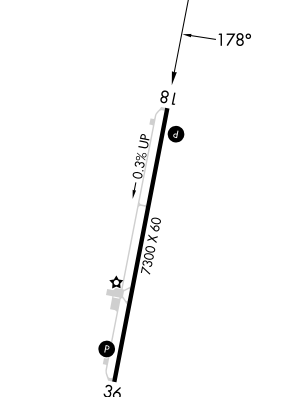
Other nodes shown include JEBEG, which is connected to TBROS.

Diagram illustrating the triangle formed by the stars LECED, RAPYO, and INGOL. The distances and angles are as follows:

- Distance LECED to RAPYO: 1.38" (49.4)
- Distance RAPYO to INGOL: 0.48" (49.4)
- Distance LECED to INGOL: 8 NM
- Angle at RAPYO: 138°
- Angle at INGOL: 32.1°
- Angle at LECED: 41°

Note: (not to scale)

ELEV 5958		TDZE 5944
-----------	--	-----------



HIRL Rwy 18-36 **L**  
REIL Rwy 18 and 36 **L**

7800 ↑	14000 ↗	LECD ✦	tr 138°	RAPYO ✦	tr 048°	INGOL △	ZIGBI	
<p>SAYOT 8000 178° 10800</p> <p>GP 3.00° TCH 45</p>								
CATEGORY	A		B		C		D	
LPV DA*	6144-¾ 200 (200-¾)							
LPV DA	7536-6 1592 (1600-6)							
LNNAV MDA#	6400-1 456 (500-1)				6400-1⅓ 456 (500-1⅓)			
LNNAV MDA	7880-1¼ 1936 (2000-1¼)		7880-1½ 1936 (2000-1½)		7880-3 1936 (2000-3)			
<b>C</b> CIRCLING	7880-1¼ 1922 (2000-1¼)		7880-1½ 1922 (2000-1½)		7880-3 1922 (2000-3)			

EUREKA, NEVADA

39°36'N-116°00'W

EUREKA (05U)

## RNAV (GPS) RWY 18

SW-4, 10 JUL 2025 to 07 AUG 2025

SW-4, 10 JUL 2025 to 07 AUG 2025