

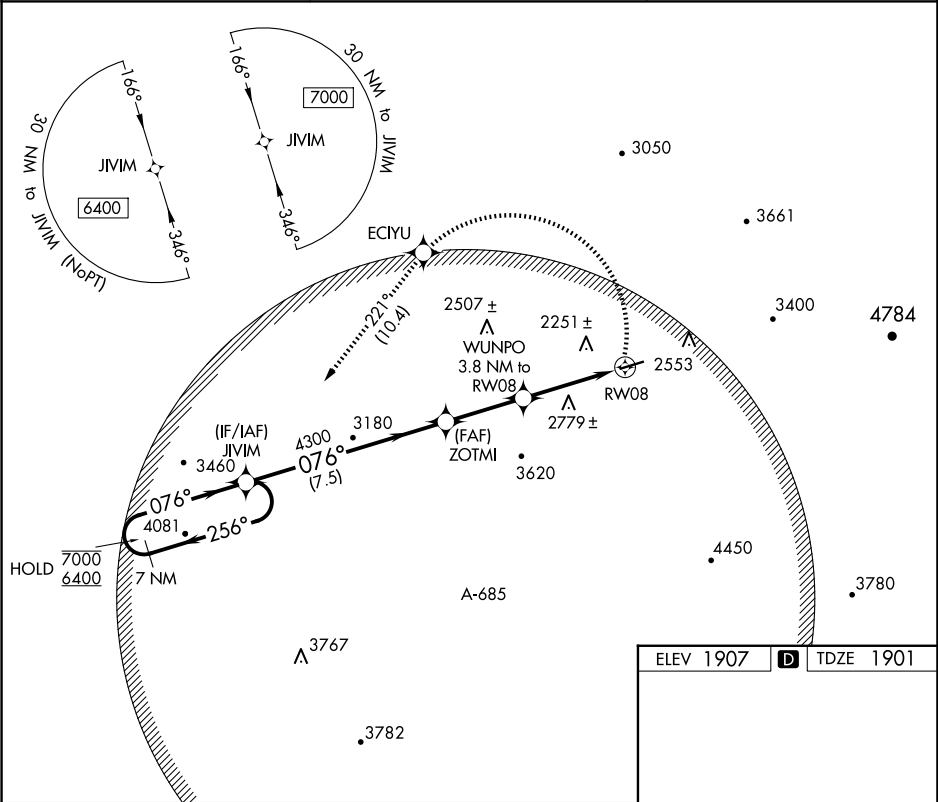
APP CRS	Rwy Idg	4017
076°	TDZE	1901
	Apt Elev	1907

RNAV (GPS) RWY 8

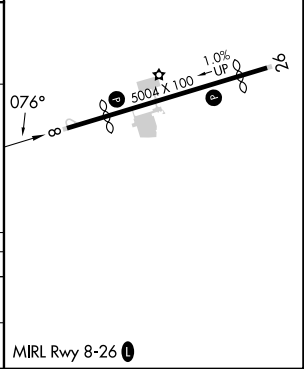
BLAIRSVILLE (DZJ)

RNP APCH - GPS	MISSED APPROACH: (Do not exceed 210K until JIVIM) Climbing left turn to 6400 direct ECIYU and on track 221° to JIVIM and hold, continue climb-in-hold to 6400.
<div>Procedure NA at night. Rwy 8 helicopter visibility reduction below 1 SM NA. When local altimeter setting not received, procedure NA. Circling NA for Cat D.</div>	

AWOS-3PT 119.325	ATLANTA CENTER 134.8 379.95	UNICOM 122.8 (CTAF)
---------------------	--------------------------------	------------------------



7 NM Holding Pattern		JIVIM	6400	ECIYU	tr 221°	JIVIM
7000	← 256°	→ 076°	076°	4300	3.31° TCH 40	3280
6400						
			7.5 NM	2.9 NM	3.8 NM	
CATEGORY	A	B	C	D		
LNVA MDA	2860-1¼ 959 (1000-1¼)	2860-1½ 959 (1000-1½)	2860-3	959 (1000-3)		
CIRCLING	2860-1¼ 953 (1000-1¼)	2940-1½ 1033 (1100-1½)	3180-3 1273 (1300-3)	NA		



SE-4, 10 JUL 2025 to 07 AUG 2025

SE-4, 10 JUL 2025 to 07 AUG 2025